

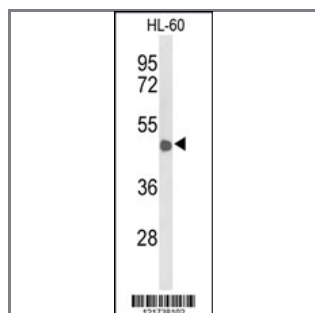
CD209 Antibody (Center)

Peptide Affinity Purified Rabbit Polyclonal Antibody (Pab)

Catalog #	Applications:	Reactivity:	Accessions:
AP9456c	WB, E	H	Q9NNX6
Concentration:	Size:	Isotype:	Clone Name:
0.25 mg/ml	0.1 mg	Rabbit Ig	RB21738

Application Data:

Calculated MW: 45775 Da



Western blot analysis of CD209 Antibody (Center) (Cat. #AP9456c) in HL-60 cell line lysates (35ug/lane). CD209 (arrow) was detected using the purified Pab.

Gene ID:	Gene Symbol:
30835	CD209

Other Names:

CD_antigen=CD209; C-type lectin domain family 4 member L; Dendritic cell-specific ICAM-3-grabbing non-integrin 1, DC-SIGN1; DC-SIGN; CD209 antigen, CLEC4L, CD209

Target/Specificity:

This CD209 antibody is generated from rabbits immunized with a KLH conjugated synthetic peptide between 336~365 amino acids from the Central region of human CD209.

Application Notes:

The suggested dilution is:

ELISA 1:1,000

Western blotting 1:100~500

Format:

Purified polyclonal antibody supplied in PBS with 0.09% (W/V) sodium azide. This antibody is purified through a protein A column, followed by peptide affinity purification.

Storage:

Maintain refrigerated at 2-8°C for up to 6 months. For long term storage store at -20°C in small aliquots to prevent freeze-thaw cycles.

Precautions:

CD209 Antibody (Center) is for research use only and not for use in diagnostic or therapeutic procedures.
