

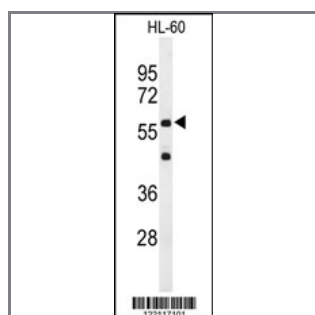
IL2RG Antibody (N-term)

Peptide Affinity Purified Rabbit Polyclonal Antibody (Pab)

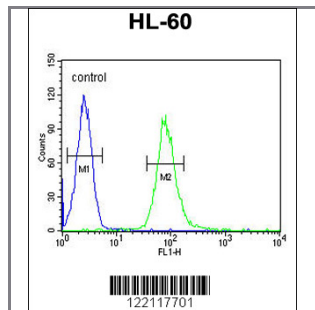
Catalog #	Applications:	Reactivity:	Accessions:
AP9450a	WB, FC, E	H	P31785

Concentration:	Size:	Isotype:	Clone Name:
0.25 mg/ml	0.1 mg	Rabbit Ig	RB22117

Application Data: Calculated MW: 42287 Da



Western blot analysis of IL2RG Antibody (N-term) (Cat. #AP9450a) in HL-60 cell line lysates (35ug/lane). IL2RG (arrow) was detected using the purified Pab.



IL2RG Antibody (N-term) (Cat. #AP9450a) flow cytometric analysis of HL-60 cells (right histogram) compared to a negative control cell (left histogram). FITC-conjugated goat-anti-rabbit secondary antibodies were used for the analysis.

Gene ID:	Gene Symbol:
3561	IL2RG

Other Names:

CD_antigen=CD132; Flags: Precursor; p64; Interleukin-2 receptor subunit gamma, IL-2 receptor subunit gamma; IL-2R subunit gamma; IL-2RG; Cytokine receptor common subunit gamma, IL2RG

Target/Specificity:

This IL2RG antibody is generated from rabbits immunized with a KLH conjugated synthetic peptide between 82~111 amino acids from the N-terminal region of human IL2RG.

Application Notes:

The suggested dilution is:

ELISA 1:1,000
Western blotting 1:100~500
Flow cytometric 1:10~50

Format:

Purified polyclonal antibody supplied in PBS with 0.09% (W/V) sodium azide. This antibody is purified through a protein A column, followed by peptide affinity purification.

Storage:

Maintain refrigerated at 2-8°C for up to 6 months. For long term storage store at -20°C in small aliquots to prevent freeze-thaw cycles.

Precautions:

IL2RG Antibody (N-term) is for research use only and not for use in diagnostic or therapeutic procedures.
