

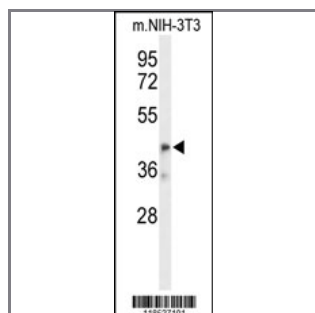
OLFML3 Antibody (Center)

Purified Rabbit Polyclonal Antibody (Pab)

Catalog #	Applications:	Reactivity:	Accessions:
AP9438c	WB, E	H, M	Q9NRN5
Concentration:	Size:	Isotype:	Clone Name:
0.25 mg/ml	0.1 mg	Rabbit Ig	RB18527

Application Data:

Calculated MW: 46010 Da



Western blot analysis of OLFML3 Antibody (Center) (Cat. #AP9438c) in mouse NIH-3T3 cell line lysates (35ug/lane). OLFML3 (arrow) was detected using the purified Pab.

Gene ID:	Gene Symbol:
56944	OLFML3

Other Names:

hOLF44; HNOEL-iso; Olfactomedin-like protein 3, UNQ663/PRO1294, PSEC0244, PSEC0173, PSEC0035, OLFML3

Target/Specificity:

This OLFML3 antibody is generated from rabbits immunized with a KLH conjugated synthetic peptide between 114~143 amino acids from the Central region of human OLFML3.

Application Notes:

The suggested dilution is:

ELISA 1:1,000

Western blotting 1:50~100

Format:

Purified polyclonal antibody supplied in PBS with 0.09% (W/V) sodium azide. This antibody is prepared by Saturated Ammonium Sulfate (SAS) precipitation followed by dialysis against PBS.

Storage:

Maintain refrigerated at 2-8°C for up to 6 months. For long term storage store at -20°C in small aliquots to prevent freeze-thaw cycles.

Precautions:

OLFML3 Antibody (Center) is for research use only and not for use in diagnostic or therapeutic procedures.
