

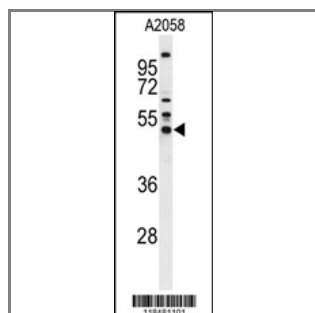
SERPINA1 Antibody (Center)

Purified Rabbit Polyclonal Antibody (Pab)

Catalog #	Applications:	Reactivity:	Accessions:
AP9431d	WB, E	H	P01009

Concentration:	Size:	Isotype:	Clone Name:
0.25 mg/ml	0.1 mg	Rabbit Ig	RB18481

Application Data: **Calculated MW: 46737 Da**



Western blot analysis of SERPINA1 Antibody (Center) (Cat. #AP9431d) in A2058 cell line lysates (35ug/lane). SERPINA1 (arrow) was detected using the purified Pab.

Gene ID:	Gene Symbol:
5265	SERPINA1

Other Names:

Short peptide from AAT, SPAAT; Serpin A1; Alpha-1-antiproteinase; Alpha-1 protease inhibitor; Alpha-1-antitrypsin, PRO2209, PRO0684, PI, AAT, SERPINA1

Target/Specificity:

This SERPINA1 antibody is generated from rabbits immunized with a KLH conjugated synthetic peptide between 165~195 amino acids from the Central region of human SERPINA1.

Application Notes:

The suggested dilution is:

ELISA 1:1,000

Western blotting 1:100~500

Format:

Purified polyclonal antibody supplied in PBS with 0.09% (W/V) sodium azide. This antibody is prepared by Saturated Ammonium Sulfate (SAS) precipitation followed by dialysis against PBS.

Storage:

Maintain refrigerated at 2-8°C for up to 6 months. For long term storage store at -20°C in small aliquots to prevent freeze-thaw cycles.

Precautions:

SERPINA1 Antibody (Center) is for research use only and not for use in diagnostic or therapeutic procedures.
