

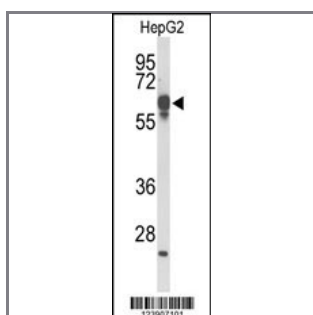
FBXL5 Antibody (N-term)

Peptide Affinity Purified Rabbit Polyclonal Antibody (Pab)

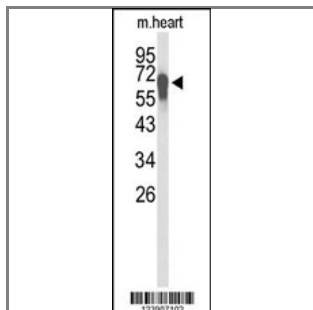
Catalog #	Applications:	Reactivity:	Accessions:
AP9409a	WB, FC, IHC	H, M	Q9UKA1

Concentration:	Size:	Isotype:	Clone Name:
0.25 mg/ml	0.1 mg	Rabbit Ig	RB23907

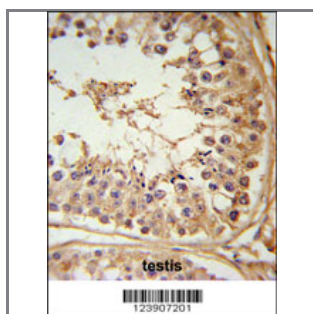
Application Data: Calculated MW: 78,555 Da



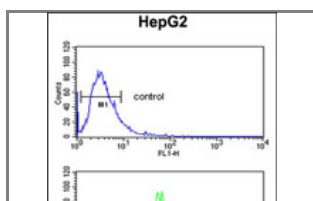
Western blot analysis of FBXL5 Antibody (N-term) (Cat. #AP9409a) in HepG2 cell line lysates (35ug/lane). FBXL5 (arrow) was detected using the purified Pab;



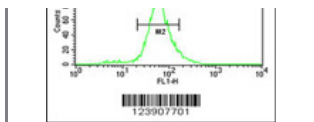
Western blot analysis of FBXL5 Antibody (N-term) (Cat. #AP9409a) in mouse heart tissue lysates (35ug/lane). FBXL5 (arrow) was detected using the purified Pab.



FBXL5 Antibody (N-term) (Cat. #AP9409a) IHC analysis in formalin fixed and paraffin embedded testis tissue followed by peroxidase conjugation of the secondary antibody and DAB staining. This data demonstrates the use of the FBXL5 Antibody (N-term) for immunohistochemistry. Clinical relevance has not been evaluated.



FBXL5 Antibody (N-term) (Cat. #AP9409a) flow cytometric analysis of HepG2 cells (bottom histogram) compared to a negative control cell (top histogram). FITC-conjugated goat-anti-rabbit secondary antibodies were



used for the analysis.

Gene ID:

26234

Gene Symbol:

FBXL5

Other Names:

p45SKP2-like protein; F-box protein FBL4/FBL5; F-box and leucine-rich repeat protein 5; F-box/LRR-repeat protein 5, FLR1, FBL5, FBL4, FBXL5

Target/Specificity:

This FBXL5 antibody is generated from rabbits immunized with a KLH conjugated synthetic peptide between 93~123 amino acids from the N-terminal region of human FBXL5.

Application Notes:

The suggested dilution is:

ELISA 1:1,000

Western blotting 1:100~500

Immunohistochemistry 1:50~100

Flow cytometry 1:10~50

Format:

Purified polyclonal antibody supplied in PBS with 0.09% (W/V) sodium azide. This antibody is purified through a protein A column, followed by peptide affinity purification.

Storage:

Maintain refrigerated at 2-8°C for up to 6 months. For long term storage store at -20°C in small aliquots to prevent freeze-thaw cycles.

Precautions:

FBXL5 Antibody (N-term) is for research use only and not for use in diagnostic or therapeutic procedures.
