

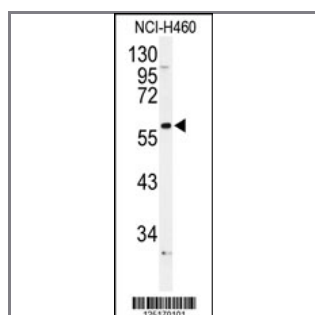
ADRA1B Antibody (Center)

Peptide Affinity Purified Rabbit Polyclonal Antibody (Pab)

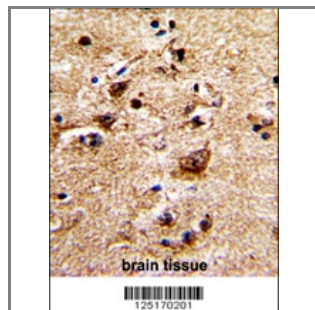
| Catalog # | Applications: | Reactivity: | Accessions: |
|----------------|---------------|-------------|------------------------|
| AP9404c | WB, IHC, E | H | P35368 |
| Concentration: | Size: | Isotype: | Clone Name: |
| 0.25 mg/ml | 0.1 mg | Rabbit Ig | RB25170 |

Application Data:

Calculated MW: 56,836 Da



Western blot analysis of ADRA1B Antibody (Center) (Cat. #AP9404c) in NCI-H460 cell line lysates (35ug/lane). ADRA1B (arrow) was detected using the purified Pab.



Formalin-fixed and paraffin-embedded human brain with ADRA1B Antibody (Center), which was peroxidase-conjugated to the secondary antibody, followed by DAB staining. This data demonstrates the use of this antibody for immunohistochemistry; clinical relevance has not been evaluated.

| Gene ID: | Gene Symbol: |
|---------------------|--------------|
| 147 | ADRA1B |

Other Names:

Alpha-1B adrenergic receptor, Alpha-1B adrenoreceptor, ADRA1B

Target/Specificity:

This ADRA1B antibody is generated from rabbits immunized with a KLH conjugated synthetic peptide between 276~306 amino acids from the Central region of human ADRA1B.

Application Notes:

The suggested dilution is:
ELISA 1:1,000

Western blotting 1:100~500
Immunohistochemistry 1:50~100

Format:

Purified polyclonal antibody supplied in PBS with 0.09% (W/V) sodium azide. This antibody is purified through a protein A column, followed by peptide affinity purification.

Storage:

Maintain refrigerated at 2-8°C for up to 6 months. For long term storage store at -20°C in small aliquots to prevent freeze-thaw cycles.

Precautions:

ADRA1B Antibody (Center) is for research use only and not for use in diagnostic or therapeutic procedures.
