

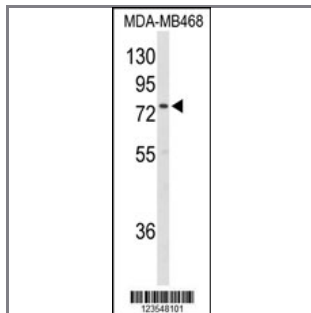
EXT2 Antibody (Center)

Peptide Affinity Purified Rabbit Polyclonal Antibody (Pab)

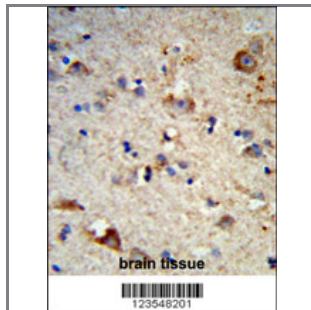
| Catalog # | Applications: | Reactivity: | Accessions: |
|-----------|--------------------|-------------|------------------------|
| AP9401c | WB, IF, FC, IHC, E | H | Q93063 |

| Concentration: | Size: | Isotype: | Clone Name: |
|----------------|--------|-----------|-------------|
| 0.25 mg/ml | 0.1 mg | Rabbit Ig | RB23548 |

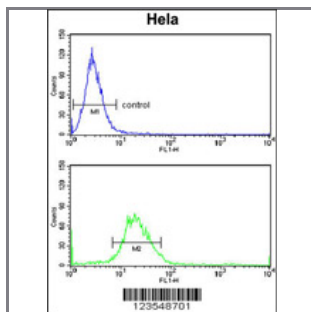
Application Data: Calculated MW: 82255 Da



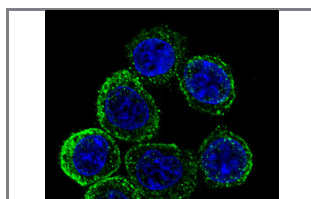
Western blot analysis of EXT2 Antibody (Center) (Cat. #AP9401c) in MDA-MB468 cell line lysates (35ug/lane). EXT2 (arrow) was detected using the purified Pab.



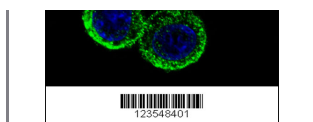
Formalin-fixed and paraffin-embedded human brain tissue reacted with EXT2 Antibody (Center), which was peroxidase-conjugated to the secondary antibody, followed by DAB staining. This data demonstrates the use of this antibody for immunohistochemistry; clinical relevance has not been evaluated.



EXT2 Antibody (Center) (Cat. #AP9401c) flow cytometry analysis of HeLa cells (bottom histogram) compared to a negative control cell (top histogram). FITC-conjugated goat-anti-rabbit secondary antibodies were used for the analysis.



Confocal immunofluorescent analysis of EXT2 Antibody (Center) (Cat#AP9401c) with HeLa cell followed by Alexa Fluor 488-conjugated goat anti-rabbit IgG (green). DAPI was used to stain the cell.



nuclear (blue).

Gene ID:

[2132](#)

Gene Symbol:

EXT2

Other Names:

Multiple exostoses protein 2; Putative tumor suppressor protein EXT2; Glucuronosyl-N-acetylglucosaminyl-proteoglycan/N-acetylglucosaminyl-proteoglycan 4-alpha-N-acetylglucosaminyltransferase; Exostosin-2, EXT2

Target/Specificity:

This EXT2 antibody is generated from rabbits immunized with a KLH conjugated synthetic peptide between 188~218 amino acids from the Central region of human EXT2.

Application Notes:

The suggested dilution is:

ELISA 1:1,000

Western blotting 1:100~500

Immunohistochemistry 1:50~100

Flow cytometry 1:10~50

Immunofluorescence 1:10~50

Format:

Purified polyclonal antibody supplied in PBS with 0.09% (W/V) sodium azide. This antibody is purified through a protein A column, followed by peptide affinity purification.

Storage:

Maintain refrigerated at 2-8°C for up to 6 months. For long term storage store at -20°C in small aliquots to prevent freeze-thaw cycles.

Precautions:

EXT2 Antibody (Center) is for research use only and not for use in diagnostic or therapeutic procedures.
