

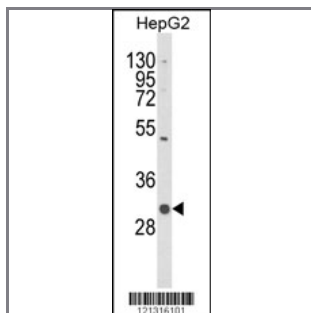
## C1QTNF6 Antibody (N-term)

Peptide Affinity Purified Rabbit Polyclonal Antibody (Pab)

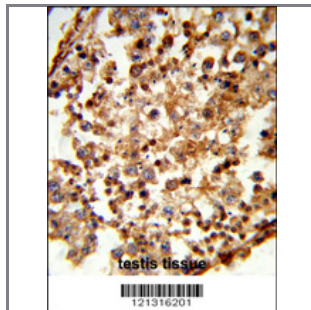
Catalog #	Applications:	Reactivity:	Accessions:
AP8883a	WB, IHC, E	H	<a href="#">Q9BXI9</a>

Concentration:	Size:	Isotype:	Clone Name:
0.25 mg/ml	0.1 mg	Rabbit Ig	RB21316

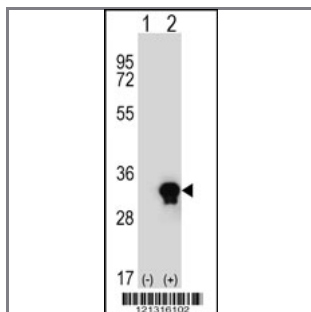
**Application Data:** **Calculated MW: 28669 Da**



Western blot analysis of C1QTNF6 Antibody (N-term) (Cat. #AP8883a) in HepG2 cell line lysates (35ug/lane). C1QTNF6 (arrow) was detected using the purified Pab.



Formalin-fixed and paraffin-embedded human testis tissue reacted with C1QTNF6 Antibody (N-term), which was peroxidase-conjugated to the secondary antibody, followed by DAB staining. This data demonstrates the use of this antibody for immunohistochemistry; clinical relevance has not been evaluated.



Western blot analysis of C1QTNF6 (arrow) using rabbit polyclonal C1QTNF6 Antibody (N-term) (Cat. #AP8883a). 293 cell lysates (2 ug/lane) either nontransfected (Lane 1) or transiently transfected (Lane 2) with the C1QTNF6 gene.

Gene ID:	Gene Symbol:
<a href="#">114904</a>	C1QTNF6

**Other Names:**

Complement C1q tumor necrosis factor-related protein 6; C1QTNF6, CTRP6, UNQ581/PRO1151

---

**Target/Specificity:**

This C1QTNF6 antibody is generated from rabbits immunized with a KLH conjugated synthetic peptide between 33~62 amino acids from the N-terminal region of human C1QTNF6.

---

**Application Notes:**

The suggested dilution is:

ELISA 1:1,000

Western blotting 1:100~500

Immunohistochemistry 1:50~100

---

**Format:**

Purified polyclonal antibody supplied in PBS with 0.09% (W/V) sodium azide. This antibody is purified through a protein A column, followed by peptide affinity purification.

---

**Storage:**

Maintain refrigerated at 2-8°C for up to 6 months. For long term storage store at -20°C in small aliquots to prevent freeze-thaw cycles.

---

**Precautions:**

C1QTNF6 Antibody (N-term) is for research use only and not for use in diagnostic or therapeutic procedures.

---