

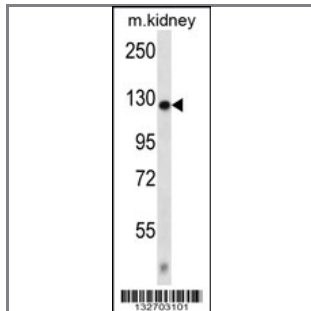
CACNA2D2 Antibody (Center)

Peptide Affinity Purified Rabbit Polyclonal Antibody (Pab)

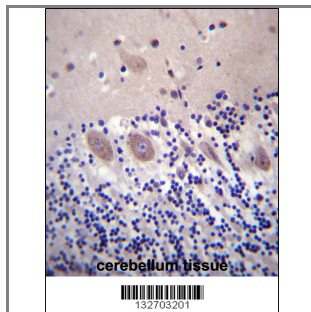
Catalog #	Applications:	Reactivity:	Accessions:
AP13380c	WB, IHC, E	H(predict), M	Q9NY47 , NP_001167522.1 , NP_001005505.1 , NP_006021.2
Concentration:	Size:	Isotype:	Clone Name:
0.25 mg/ml	0.1 mg	Rabbit Ig	RB32703

Application Data:

Calculated MW: 129876 Da



CACNA2D2 Antibody (Center) (Cat. #AP13380c) western blot analysis in mouse kidney tissue lysates (35ug/lane). This demonstrates the CACNA2D2 antibody detected the CACNA2D2 protein (arrow).



CACNA2D2 Antibody (Center) (Cat. #AP13380c) immunohistochemistry analysis in formalin fixed and paraffin embedded human cerebellum tissue followed by peroxidase conjugation of the secondary antibody and DAB staining. This data demonstrates the use of CACNA2D2 Antibody (Center) for immunohistochemistry. Clinical relevance has not been evaluated.

Gene ID:	Gene Symbol:
9254	CACNA2D2

Other Names:

Voltage-dependent calcium channel subunit alpha-2/delta-2; CACNA2D2; KIAA0558

Target/Specificity:

This CACNA2D2 antibody is generated from rabbits immunized with a KLH conjugated synthetic peptide between 642-671 amino acids from the Central region of human CACNA2D2.

Application Notes:

The suggested dilution is:

ELISA 1:1,000

Western blotting 1:100~500

Immunohistochemistry 1:10~50

Format:

Purified polyclonal antibody supplied in PBS with 0.09% (W/V) sodium azide. This antibody is purified through a protein A column, followed by peptide affinity purification.

Storage:

CACNA2D2 Antibody (Center) can be refrigerated at 2-8°C for up to 6 months. For long term storage, place the at -20°C.

Precautions:

CACNA2D2 Antibody (Center) is for research use only and not for use in diagnostic or therapeutic procedures.
