

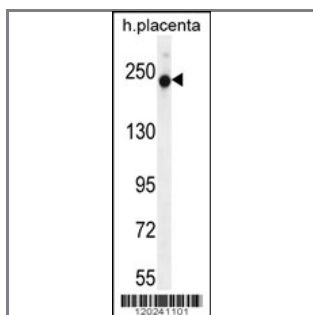
RUSC2 Antibody (N-term)

Peptide Affinity Purified Rabbit Polyclonal Antibody (Pab)

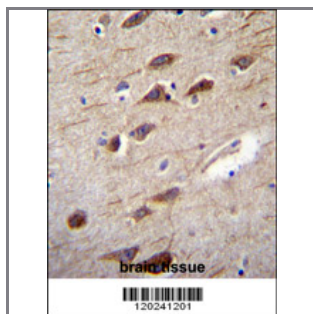
Catalog #	Applications:	Reactivity:	Accessions:
AP12095a	WB, IHC, E	H	NP_055621.1 , NP_001129471.1 , Q8N2Y8
Concentration:	Size:	Isotype:	Clone Name:
0.25 mg/ml	0.1 mg	Rabbit Ig	RB20241

Application Data:

Calculated MW: 161195 Da



RUSC2 Antibody (N-term) (Cat. #AP12095a) western blot analysis in human placenta tissue lysates (35ug/lane). This demonstrates the RUSC2 antibody detected the RUSC2 protein (arrow).



RUSC2 Antibody (N-term) (Cat. #AP12095a) immunohistochemistry analysis in formalin fixed and paraffin embedded human brain tissue followed by peroxidase conjugation of the secondary antibody and DAB staining. This data demonstrates the use of RUSC2 Antibody (N-term) for immunohistochemistry. Clinical relevance has not been evaluated.

Gene ID:	Gene Symbol:
9853	RUSC2

Other Names:

RUSC2, Iporin, KIAA0375

Target/Specificity:

This RUSC2 antibody is generated from rabbits immunized with a KLH conjugated synthetic peptide between 315-344 amino acids from the N-terminal region of human RUSC2.

Application Notes:

The suggested dilution is:

ELISA 1:1,000

Western blotting 1:100~500

Immunohistochemistry 1:50~100

Format:

Purified polyclonal antibody supplied in PBS with 0.09% (W/V) sodium azide. This antibody is purified through a protein A column, followed by peptide affinity purification.

Storage:

Maintain refrigerated at 2-8°C for up to 6 months. For long term storage store at -20°C in small aliquots to prevent freeze-thaw cycles.

Precautions:

RUSC2 Antibody (N-term) is for research use only and not for use in diagnostic or therapeutic procedures.
