

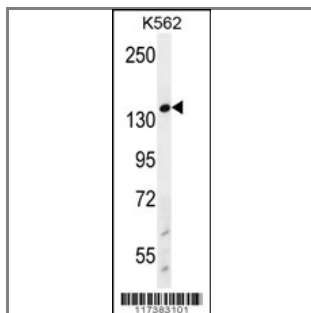
WRN Antibody (Center T802)

Peptide Affinity Purified Rabbit Polyclonal Antibody (Pab)

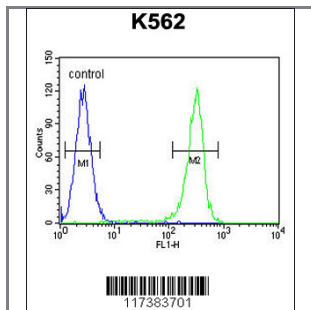
Catalog #	Applications:	Reactivity:	Accessions:
AP12078c	WB, FC, E	H	NP_000544.2 , Q14191
Concentration:	Size:	Isotype:	Clone Name:
0.25 mg/ml	0.1 mg	Rabbit Ig	RB17383

Application Data:

Calculated MW: 162495 Da



WRN Antibody (Center T802) (Cat. #AP12078c) western blot analysis in K562 cell line lysates (35ug/lane). This demonstrates the WRN antibody detected the WRN protein (arrow).



WRN Antibody (Center T802) (Cat. #AP12078c) flow cytometric analysis of K562 cells (right histogram) compared to a negative control cell (left histogram). FITC-conjugated goat-anti-rabbit secondary antibodies were used for the analysis.

Gene ID:	Gene Symbol:
7486	WRN

Other Names:

WRN, Werner syndrome ATP-dependent helicase, RECQ3; RECQL2

Target/Specificity:

This WRN antibody is generated from rabbits immunized with a KLH conjugated synthetic peptide between 794-825 amino acids from the Central region of human WRN.

Application Notes:

The suggested dilution is:
ELISA 1:1,000

Western blotting 1:100~500

Flow cytometric 1:10~50

Format:

Purified polyclonal antibody supplied in PBS with 0.09% (W/V) sodium azide. This antibody is purified through a protein A column, followed by peptide affinity purification.

Storage:

Maintain refrigerated at 2-8°C for up to 6 months. For long term storage store at -20°C in small aliquots to prevent freeze-thaw cycles.

Precautions:

WRN Antibody (Center T802) is for research use only and not for use in diagnostic or therapeutic procedures.
