

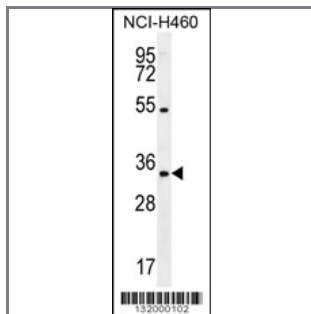
PURB Antibody (C-term)

Peptide Affinity Purified Rabbit Polyclonal Antibody (Pab)

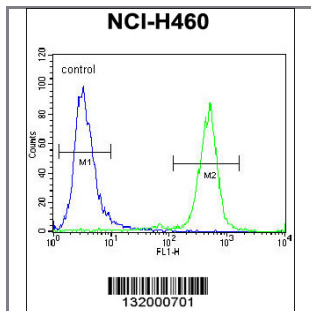
Catalog #	Applications:	Reactivity:	Accessions:
AP12051b	WB, FC, E	H	NP_150093.1 , Q96QR8
Concentration:	Size:	Isotype:	Clone Name:
0.25 mg/ml	0.1 mg	Rabbit Ig	RB32000

Application Data:

Calculated MW: 33241 Da



PURB Antibody (C-term) (Cat. #AP12051b) western blot analysis in NCI-H460 cell line lysates (35ug/lane). This demonstrates the PURB antibody detected the PURB protein (arrow).



PURB Antibody (C-term) (Cat. #AP12051b) flow cytometric analysis of NCI-H460 cells (right histogram) compared to a negative control cell (left histogram). FITC-conjugated goat-anti-rabbit secondary antibodies were used for the analysis.

Gene ID:	Gene Symbol:
5814	PURB

Other Names:

PURB, Transcriptional activator protein Pur-beta,

Target/Specificity:

This PURB antibody is generated from rabbits immunized with a KLH conjugated synthetic peptide between 267-297 amino acids from the C-terminal region of human PURB.

Application Notes:

The suggested dilution is:

ELISA 1:1,000
Western blotting 1:100~500
Flow cytometric 1:10~50

Format:

Purified polyclonal antibody supplied in PBS with 0.09% (W/V) sodium azide. This antibody is purified through a protein A column, followed by peptide affinity purification.

Storage:

Maintain refrigerated at 2-8°C for up to 6 months. For long term storage store at -20°C in small aliquots to prevent freeze-thaw cycles.

Precautions:

PURB Antibody (C-term) is for research use only and not for use in diagnostic or therapeutic procedures.
