

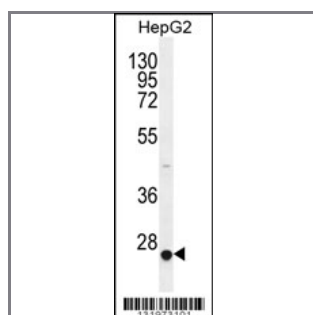
CACNG6 Antibody (Center)

Peptide Affinity Purified Rabbit Polyclonal Antibody (Pab)

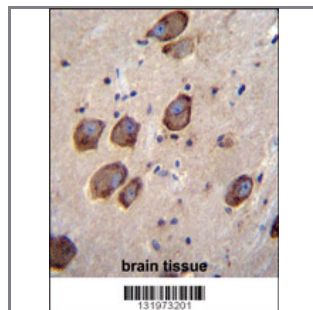
Catalog #	Applications:	Reactivity:	Accessions:
AP12044c	WB, IF, IHC, E	H	NP_114103.2 , Q9BXT2
Concentration:	Size:	Isotype:	Clone Name:
0.25 mg/ml	0.1 mg	Rabbit Ig	RB31973

Application Data:

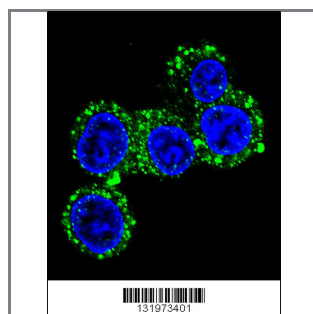
Calculated MW: 28129 Da



CACNG6 Antibody (Center) (Cat. #AP12044c) western blot analysis in HepG2 cell line lysates (35ug/lane). This demonstrates the CACNG6 antibody detected the CACNG6 protein (arrow).



CACNG6 Antibody (Center) (Cat. #AP12044c) immunohistochemistry analysis in formalin fixed and paraffin embedded human brain tissue followed by peroxidase conjugation of the secondary antibody and DAB staining. This data demonstrates the use of CACNG6 Antibody (Center) for immunohistochemistry. Clinical relevance has not been evaluated.



Confocal immunofluorescent analysis of CACNG6 Antibody (Center) (Cat. #AP12044c) with HepG2 cells followed by Alexa Fluor 488-conjugated goat anti-rabbit IgG (green). DAPI was used to stain the cell nuclear (blue).

Gene ID:	Gene Symbol:
59285	CACNG6

Other Names:

CACNG6, Voltage-dependent calcium channel gamma-6 subunit,

Target/Specificity:

This CACNG6 antibody is generated from rabbits immunized with a KLH conjugated synthetic peptide between 115-144 amino acids from the Central region of human CACNG6.

Application Notes:

The suggested dilution is:

ELISA 1:1,000

Western blotting 1:100~500

Immunohistochemistry 1:10~50

Immunofluorescence 1:10~50

Format:

Purified polyclonal antibody supplied in PBS with 0.09% (W/V) sodium azide. This antibody is purified through a protein A column, followed by peptide affinity purification.

Storage:

Maintain refrigerated at 2-8°C for up to 6 months. For long term storage store at -20°C in small aliquots to prevent freeze-thaw cycles.

Precautions:

CACNG6 Antibody (Center) is for research use only and not for use in diagnostic or therapeutic procedures.
