

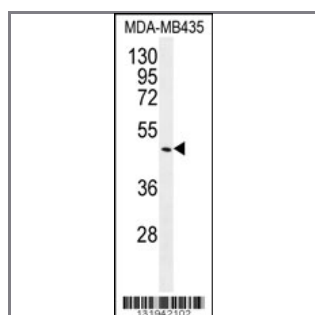
GDF5 Antibody (C-term)

Peptide Affinity Purified Rabbit Polyclonal Antibody (Pab)

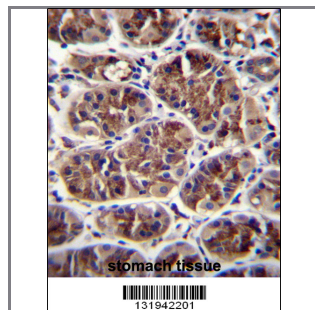
Catalog #	Applications:	Reactivity:	Accessions:
AP12038b	WB, IHC, E	H	NP_000548.1 , P43026
Concentration:	Size:	Isotype:	Clone Name:
0.25 mg/ml	0.1 mg	Rabbit Ig	RB31942

Application Data:

Calculated MW: 55411 Da



GDF5 Antibody (C-term) (Cat. #AP12038b) western blot analysis in MDA-MB435 cell line lysates (35ug/lane). This demonstrates the GDF5 antibody detected the GDF5 protein (arrow).



GDF5 Antibody (C-term) (Cat. #AP12038b) immunohistochemistry analysis in formalin fixed and paraffin embedded human stomach tissue followed by peroxidase conjugation of the secondary antibody and DAB staining. This data demonstrates the use of GDF5 Antibody (C-term) for immunohistochemistry. Clinical relevance has not been evaluated.

Gene ID:	Gene Symbol:
8200	GDF5

Other Names:

GDF5, Growth/differentiation factor 5, CDMP1

Target/Specificity:

This GDF5 antibody is generated from rabbits immunized with a KLH conjugated synthetic peptide between 350-379 amino acids from the C-terminal region of human GDF5.

Application Notes:

The suggested dilution is:
ELISA 1:1,000

Western blotting 1:100~500
Immunohistochemistry 1:10~50

Format:

Purified polyclonal antibody supplied in PBS with 0.09% (W/V) sodium azide. This antibody is purified through a protein A column, followed by peptide affinity purification.

Storage:

Maintain refrigerated at 2-8°C for up to 6 months. For long term storage store at -20°C in small aliquots to prevent freeze-thaw cycles.

Precautions:

GDF5 Antibody (C-term) is for research use only and not for use in diagnostic or therapeutic procedures.
