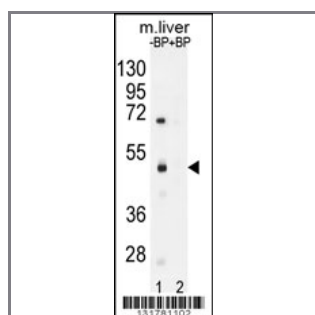


## SAMD8 Antibody (N-term)

### Peptide Affinity Purified Rabbit Polyclonal Antibody (Pab)

<b>Catalog #</b>	<b>Applications:</b>	<b>Reactivity:</b>	<b>Accessions:</b>
AP12035a	WB, E	H(predict), M	<a href="#">NP_653261.1</a> , <a href="#">Q96LT4</a>
<b>Concentration:</b>	<b>Size:</b>	<b>Isotype:</b>	<b>Clone Name:</b>
0.25 mg/ml	0.1 mg	Rabbit Ig	RB31781

#### Application Data: Calculated MW: 48321 Da



Western blot analysis of SAMD8 Antibody (N-term) Pab (Cat. #AP12035a) pre-incubated without(lane 1) and with(lane 2) blocking peptide in mouse liver tissue lysate. SAMD8 Antibody (N-term) (arrow) was detected using the purified Pab (1:60/250 dilution).

<b>Gene ID:</b>	<b>Gene Symbol:</b>
<a href="#">142891</a>	SAMD8

#### Other Names:

SAMD8, Sphingomyelin synthase-related protein 1,

#### Target/Specificity:

This SAMD8 antibody is generated from rabbits immunized with a KLH conjugated synthetic peptide between 45-75 amino acids from the N-terminal region of human SAMD8.

#### Application Notes:

The suggested dilution is:  
 ELISA 1:1,000  
 Western blotting 1:100~500

#### Format:

Purified polyclonal antibody supplied in PBS with 0.09% (W/V) sodium azide. This antibody is purified through a protein A column, followed by peptide affinity purification.

#### Storage:

Maintain refrigerated at 2-8°C for up to 6 months. For long term storage store at -20°C in

small aliquots to prevent freeze-thaw cycles.

---

**Precautions:**

SAMD8 Antibody (N-term) is for research use only and not for use in diagnostic or therapeutic procedures.

---