

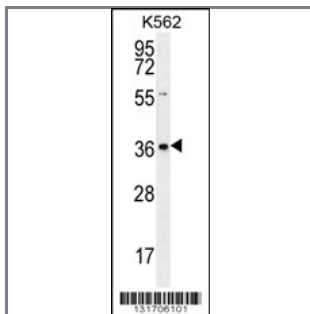
## SLC25A31 Antibody (Center)

### Peptide Affinity Purified Rabbit Polyclonal Antibody (Pab)

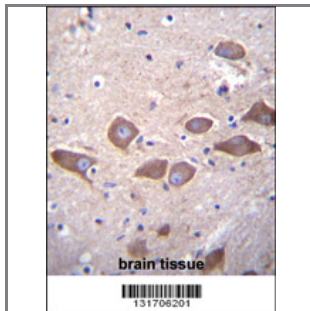
Catalog #	Applications:	Reactivity:	Accessions:
AP12028c	WB, IF, IHC, E	H	<a href="#">Q9H0C2</a> , <a href="#">NP_112581.1</a>
Concentration:	Size:	Isotype:	Clone Name:
0.25 mg/ml	0.1 mg	Rabbit Ig	RB31706

#### Application Data:

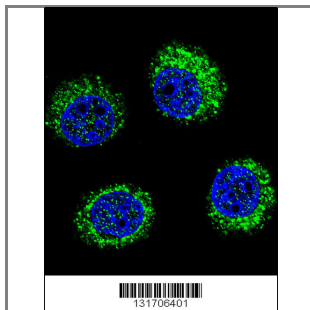
**Calculated MW: 35022 Da**



SLC25A31 Antibody (Center) (Cat. #AP12028c) western blot analysis in K562 cell line lysates (35ug/lane). This demonstrates the SLC25A31 antibody detected the SLC25A31 protein (arrow).



SLC25A31 Antibody (Center) (Cat. #AP12028c) immunohistochemistry analysis in formalin fixed and paraffin embedded human brain tissue followed by peroxidase conjugation of the secondary antibody and DAB staining. This data demonstrates the use of SLC25A31 Antibody (Center) for immunohistochemistry. Clinical relevance has not been evaluated.



Confocal immunofluorescent analysis of SLC25A31 Antibody (Center) (Cat#AP12028c) with U-251MG cell followed by Alexa Fluor 488-conjugated goat anti-rabbit IgG (green). DAPI was used to stain the cell nuclear (blue).

Gene ID:	Gene Symbol:
<a href="#">83447</a>	SLC25A31

**Other Names:**

SLC25A31,ADP/ATP translocase 4,AAC4; ANT4; SFEC

---

**Target/Specificity:**

This SLC25A31 antibody is generated from rabbits immunized with a KLH conjugated synthetic peptide between 146-175 amino acids from the Central region of human SLC25A31.

---

**Application Notes:**

The suggested dilution is:

ELISA 1:1,000

Western blotting 1:100~500

Immunohistochemistry 1:10~50

Immunofluorescence 1:10~50

---

**Format:**

Purified polyclonal antibody supplied in PBS with 0.09% (W/V) sodium azide. This antibody is purified through a protein A column, followed by peptide affinity purification.

---

**Storage:**

Maintain refrigerated at 2-8°C for up to 6 months. For long term storage store at -20°C in small aliquots to prevent freeze-thaw cycles.

---

**Precautions:**

SLC25A31 Antibody (Center) is for research use only and not for use in diagnostic or therapeutic procedures.

---