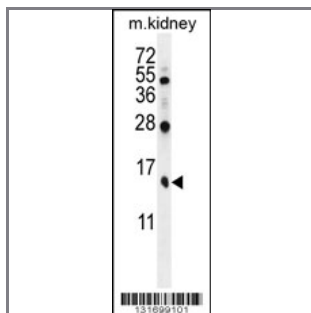


## TBCA Antibody (Center)

### Peptide Affinity Purified Rabbit Polyclonal Antibody (Pab)

<b>Catalog #</b>	<b>Applications:</b>	<b>Reactivity:</b>	<b>Accessions:</b>
AP12024c	WB, IHC, E	H(predict), M	<a href="#">O75347</a> , <a href="#">NP_004598.1</a>
<b>Concentration:</b>	<b>Size:</b>	<b>Isotype:</b>	<b>Clone Name:</b>
0.25 mg/ml	0.1 mg	Rabbit Ig	RB31699

#### Application Data: Calculated MW: 12855 Da



TBCA Antibody (Center) (Cat. #AP12024c) western blot analysis in mouse kidney tissue lysates (35ug/lane). This demonstrates the TBCA antibody detected the TBCA protein (arrow).



TBCA Antibody (Center) (Cat. #AP12024c) immunohistochemistry analysis in formalin fixed and paraffin embedded human rectum tissue followed by peroxidase conjugation of the secondary antibody and DAB staining. This data demonstrates the use of TBCA Antibody (Center) for immunohistochemistry. Clinical relevance has not been evaluated.

<b>Gene ID:</b>	<b>Gene Symbol:</b>
<a href="#">6902</a>	TBCA

#### Other Names:

TBCA, Tubulin-specific chaperone A,

#### Target/Specificity:

This TBCA antibody is generated from rabbits immunized with a KLH conjugated synthetic peptide between 37-66 amino acids from the Central region of human TBCA.

#### Application Notes:

The suggested dilution is:  
ELISA 1:1,000

Western blotting 1:100~500  
Immunohistochemistry 1:10~50

---

**Format:**

Purified polyclonal antibody supplied in PBS with 0.09% (W/V) sodium azide. This antibody is purified through a protein A column, followed by peptide affinity purification.

---

**Storage:**

Maintain refrigerated at 2-8°C for up to 6 months. For long term storage store at -20°C in small aliquots to prevent freeze-thaw cycles.

---

**Precautions:**

TBCA Antibody (Center) is for research use only and not for use in diagnostic or therapeutic procedures.

---