

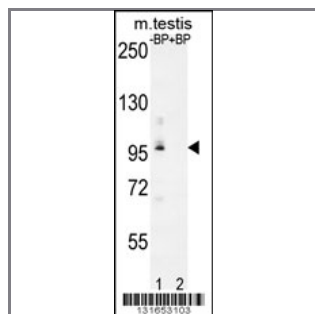
PDPR Antibody (C-term)

Peptide Affinity Purified Rabbit Polyclonal Antibody (Pab)

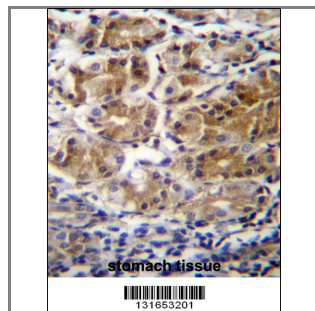
Catalog #	Applications:	Reactivity:	Accessions:
AP12014b	WB, IHC, E	H(predict), M	NP_060460.4 , Q8NCN5
Concentration:	Size:	Isotype:	Clone Name:
0.25 mg/ml	0.1 mg	Rabbit Ig	RB31653

Application Data:

Calculated MW: 99364 Da



Western blot analysis of PDPR Antibody (C-term) Pab (Cat. #AP12014b) pre-incubated without (lane 1) and with (lane 2) blocking peptide in mouse testis tissue lysate. PDPR Antibody (C-term) (arrow) was detected using the purified Pab (1:60/250 dilution).



PDPR Antibdy (C-term) (Cat. #AP12014b) immunohistochemistry analysis in formalin fixed and paraffin embedded human stomach tissue followed by peroxidase conjugation of the secondary antibody and DAB staining. This data demonstrates the use of PDPR Antibdy (C-term) for immunohistochemistry. Clinical relevance has not been evaluated.

Gene ID:	Gene Symbol:
55066	PDPR

Other Names:

PDPR, Pyruvate dehydrogenase phosphatase regulatory subunit, mitochondrial, KIAA1990

Target/Specificity:

This PDPR antibody is generated from rabbits immunized with a KLH conjugated synthetic peptide between 828-858 amino acids from the C-terminal region of human PDPR.

Application Notes:

The suggested dilution is:

ELISA 1:1,000
Western blotting 1:100~500
Immunohistochemistry 1:10~50

Format:

Purified polyclonal antibody supplied in PBS with 0.09% (W/V) sodium azide. This antibody is purified through a protein A column, followed by peptide affinity purification.

Storage:

Maintain refrigerated at 2-8°C for up to 6 months. For long term storage store at -20°C in small aliquots to prevent freeze-thaw cycles.

Precautions:

PDPR Antibody (C-term) is for research use only and not for use in diagnostic or therapeutic procedures.
