

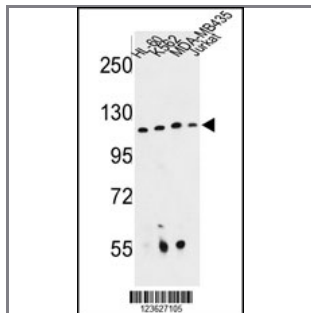
RPGRIP1 Antibody (Center)

Peptide Affinity Purified Rabbit Polyclonal Antibody (Pab)

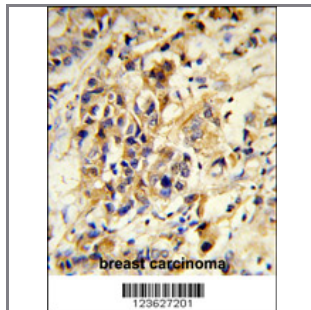
Catalog #	Applications:	Reactivity:	Accessions:
AP8871c	WB, FC, IHC, E	H	Q96KN7 , NP_065099
Concentration:	Size:	Isotype:	Clone Name:
0.25 mg/ml	0.1 mg	Rabbit Ig	RB23627

Application Data:

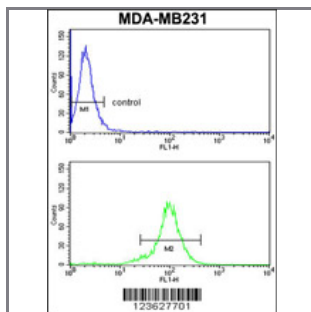
Calculated MW: 103123 Da



Western blot analysis of RPGRIP1 Antibody (Center) (Cat. #AP8871c) in HL-60, K562, MDA-MB435, Jurkat cell line lysates (35ug/lane). RPGRIP1 (arrow) was detected using the purified Pab.



Formalin-fixed and paraffin-embedded human breast carcinoma reacted with RPGRIP1 Antibody (Center), which was peroxidase-conjugated to the secondary antibody, followed by DAB staining. This data demonstrates the use of this antibody for immunohistochemistry; clinical relevance has not been evaluated.



RPGRIP1 Antibody (Center) (Cat.#AP8871c) flow cytometry analysis of MDA-MB231 cells (bottom histogram) compared to a negative control cell (top histogram). FITC-conjugated goat-anti-rabbit secondary antibodies were used for the analysis.

Gene ID:	Gene Symbol:
57096	RPGRIP1

Other Names:

X-linked retinitis pigmentosa GTPase regulator-interacting protein 1, RPGR-interacting protein 1, RPGRIP1

Target/Specificity:

This RPGRIP1 antibody is generated from rabbits immunized with a KLH conjugated synthetic peptide between 536~566 amino acids from the Center region of human RPGRIP1.

Application Notes:

The suggested dilution is:

ELISA 1:1,000

Western blotting 1:100~500

Immunohistochemistry 1:50~100

Flow cytometric 1:10~50

Format:

Purified polyclonal antibody supplied in PBS with 0.09% (W/V) sodium azide. This antibody is purified through a protein A column, followed by peptide affinity purification.

Storage:

Maintain refrigerated at 2-8°C for up to 6 months. For long term storage store at -20°C in small aliquots to prevent freeze-thaw cycles.

Precautions:

RPGRIP1 Antibody (Center) is for research use only and not for use in diagnostic or therapeutic procedures.
