

ADCY8 Antibody (Center)

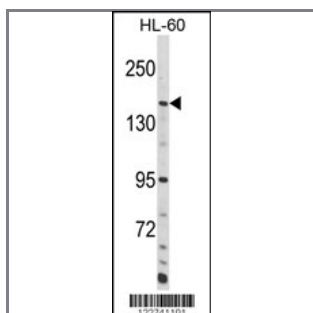
Peptide Affinity Purified Rabbit Polyclonal Antibody (Pab)

Catalog #	Applications:	Reactivity:	Accessions:
AP8858c	WB, FC, IHC, E	H	P40145

Concentration:	Size:	Isotype:	Clone Name:
0.25 mg/ml	0.1 mg	Rabbit Ig	RB22741

Application Data:

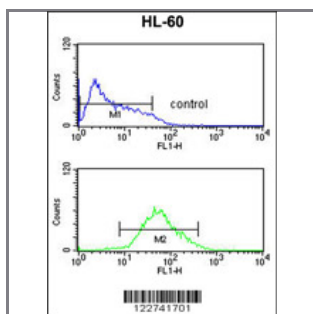
Calculated MW: 140122 Da



Western blot analysis of ADCY8 Antibody (Center) (Cat. #AP8858c) in HL-60 cell line lysates (35ug/lane). ADCY8 (arrow) was detected using the purified Pab.



Formalin-fixed and paraffin-embedded mouse brain tissue reacted with ADCY8 Antibody (Center), which was peroxidase-conjugated to the secondary antibody, followed by DAB staining. This data demonstrates the use of this antibody for immunohistochemistry; clinical relevance has not been evaluated.



ADCY8 Antibody (Center) (Cat. #AP8858c) flow cytometric analysis of HL-60 cells (bottom histogram) compared to a negative control cell (top histogram). FITC-conjugated goat-anti-rabbit secondary antibodies were used for the analysis.

Gene ID:	Gene Symbol:
114	ADCY8

Other Names:

Ca(2+)/calmodulin-activated adenylyl cyclase; Adenylyl cyclase 8; ATP pyrophosphate-lyase 8; Adenylate cyclase type VIII; Adenylate cyclase type 8; ADCY8

Target/Specificity:

This ADCY8 antibody is generated from rabbits immunized with a KLH conjugated synthetic peptide between 952~982 amino acids from the Center region of human ADCY8.

Application Notes:

The suggested dilution is:

ELISA 1:1,000

Western blotting 1:100~500

Immunohistochemistry 1:50~100

Flow cytometry 1:10~50

Format:

Purified polyclonal antibody supplied in PBS with 0.09% (W/V) sodium azide. This antibody is purified through a protein A column, followed by peptide affinity purification.

Storage:

Maintain refrigerated at 2-8°C for up to 6 months. For long term storage store at -20°C in small aliquots to prevent freeze-thaw cycles.

Precautions:

ADCY8 Antibody (Center) is for research use only and not for use in diagnostic or therapeutic procedures.
