

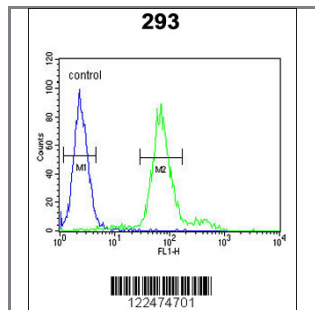
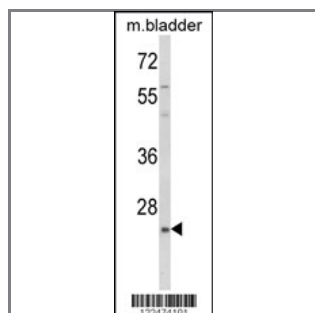
KLF16 Antibody (Center)

Peptide Affinity Purified Rabbit Polyclonal Antibody (Pab)

Catalog #	Applications:	Reactivity:	Accessions:
AP8855c	WB, FC, E	H, M	Q9B XK1

Concentration:	Size:	Isotype:	Clone Name:
0.25 mg/ml	0.1 mg	Rabbit Ig	RB22474

Application Data: **Calculated MW: 25431 Da**



Gene ID:	Gene Symbol:
83855	KLF16

Other Names:

Transcription factor NSLP2; Novel Sp1-like zinc finger transcription factor 2; Basic transcription element-binding protein 4, BTE-binding protein 4; Transcription factor BTEB4; Krueppel-like factor 16; KLF16, BTEB4, NSLP2

Target/Specificity:

This KLF16 antibody is generated from rabbits immunized with a KLH conjugated synthetic peptide between 157~187 amino acids from the Center region of human KLF16.

Application Notes:

The suggested dilution is:

ELISA 1:1,000

Western blotting 1:100~500

Flow cytometric 1:10~50

Format:

Purified polyclonal antibody supplied in PBS with 0.09% (W/V) sodium azide. This antibody is purified through a protein A column, followed by peptide affinity purification.

Storage:

Maintain refrigerated at 2-8°C for up to 6 months. For long term storage store at -20°C in small aliquots to prevent freeze-thaw cycles.

Precautions:

KLF16 Antibody (Center) is for research use only and not for use in diagnostic or therapeutic procedures.
