

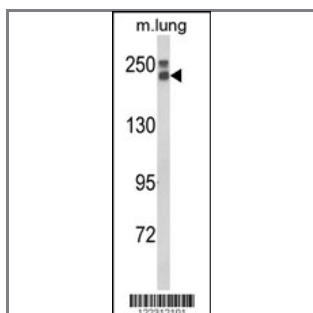
COL18A1 Antibody (N-term)

Peptide Affinity Purified Rabbit Polyclonal Antibody (Pab)

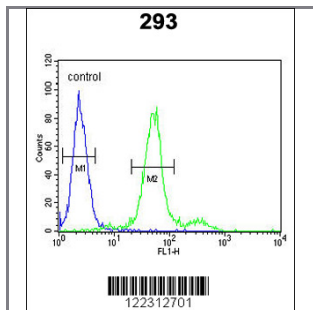
Catalog #	Applications:	Reactivity:	Accessions:
AP8852a	WB, FC, E	H, M	P39060

Concentration:	Size:	Isotype:	Clone Name:
0.25 mg/ml	0.1 mg	Rabbit Ig	RB22312

Application Data: Calculated MW: 178188 Da



Western blot analysis of COL18A1 Antibody (N-term) (Cat. #AP8852a) in mouse lung tissue lysates (35ug/lane). COL18A1 (arrow) was detected using the purified Pab.



COL18A1 Antibody (N-term) (Cat. #AP8852a) flow cytometric analysis of 293 cells (right histogram) compared to a negative control cell (left histogram). FITC-conjugated goat-anti-rabbit secondary antibodies were used for the analysis.

Gene ID:	Gene Symbol:
80781	COL18A1

Other Names:

Endostatin; Collagen alpha-1(XVIII) chain; COL18A1

Target/Specificity:

This COL18A1 antibody is generated from rabbits immunized with a KLH conjugated synthetic peptide between 243~272 amino acids from the N-terminal region of human COL18A1.

Application Notes:

The suggested dilution is:
ELISA 1:1,000

Western blotting 1:100~500

Flow cytometric 1:10~50

Format:

Purified polyclonal antibody supplied in PBS with 0.09% (W/V) sodium azide. This antibody is purified through a protein A column, followed by peptide affinity purification.

Storage:

Maintain refrigerated at 2-8°C for up to 6 months. For long term storage store at -20°C in small aliquots to prevent freeze-thaw cycles.

Precautions:

COL18A1 Antibody (N-term) is for research use only and not for use in diagnostic or therapeutic procedures.
