

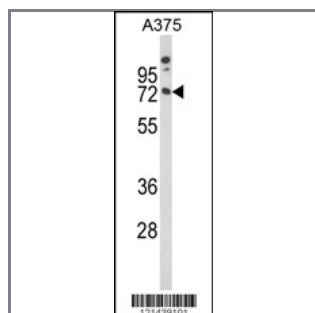
MAG Antibody (Center)

Peptide Affinity Purified Rabbit Polyclonal Antibody (Pab)

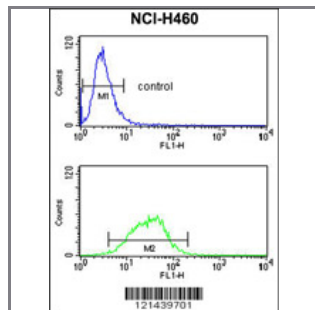
Catalog #	Applications:	Reactivity:	Accessions:
AP8845c	WB, FC, E	H	P20916
Concentration:	Size:	Isotype:	Clone Name:
0.25 mg/ml	0.1 mg	Rabbit Ig	RB21439

Application Data:

Calculated MW: 69069 Da



Western blot analysis of MAG Antibody (Center) (Cat. #AP8845c) in A375 cell line lysates (35ug/lane). MAG (arrow) was detected using the purified Pab.



MAG Antibody (Center) (Cat. #AP8845c) flow cytometry analysis of NCI-H460 cells (bottom histogram) compared to a negative control cell (top histogram). FITC-conjugated goat-anti-rabbit secondary antibodies were used for the analysis.

Gene ID:	Gene Symbol:
4099	MAG

Other Names:

Siglec-4a; Myelin-associated glycoprotein; MAG; GMA

Target/Specificity:

This MAG antibody is generated from rabbits immunized with a KLH conjugated synthetic peptide between 445~475 amino acids from the Center region of human MAG.

Application Notes:

The suggested dilution is:
ELISA 1:1,000

Western blotting 1:100-500

Flow cytometry 1:10~50

Format:

Purified polyclonal antibody supplied in PBS with 0.09% (W/V) sodium azide. This antibody is purified through a protein A column, followed by peptide affinity purification.

Storage:

Maintain refrigerated at 2-8°C for up to 6 months. For long term storage store at -20°C in small aliquots to prevent freeze-thaw cycles.

Precautions:

MAG Antibody (Center) is for research use only and not for use in diagnostic or therapeutic procedures.
