

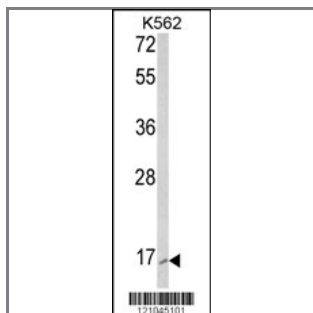
RAC2 Antibody (C-term)

Peptide Affinity Purified Rabbit Polyclonal Antibody (Pab)

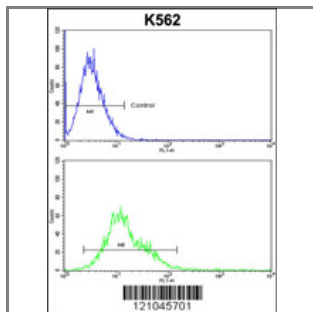
Catalog #	Applications:	Reactivity:	Accessions:
AP8839b	WB, FC, E	H	P15153

Concentration:	Size:	Isotype:	Clone Name:
0.25 mg/ml	0.1 mg	Rabbit Ig	RB21045

Application Data: Calculated MW: 21429 Da



Western blot analysis of RAC2 Antibody (C-term) (Cat. #AP8839b) in K562 cell line lysates (35ug/lane). RAC2 (arrow) was detected using the purified Pab.



RAC2 Antibody (C-term) (Cat. #AP8839b) flow cytometric analysis of k562 cells (bottom histogram) compared to a negative control cell (top histogram). FITC-conjugated goat-anti-rabbit secondary antibodies were used for the analysis.

Gene ID:	Gene Symbol:
5880	RAC2

Other Names:

GX; Small G protein; p21-Rac2; Ras-related C3 botulinum toxin substrate 2; RAC2

Target/Specificity:

This RAC2 antibody is generated from rabbits immunized with a KLH conjugated synthetic peptide between 163~192 amino acids from the C-terminal region of human RAC2.

Application Notes:

The suggested dilution is:
ELISA 1:1,000

Western blotting 1:100~500

Flow cytometric 1:10~50

Format:

Purified polyclonal antibody supplied in PBS with 0.09% (W/V) sodium azide. This antibody is purified through a protein A column, followed by peptide affinity purification.

Storage:

Maintain refrigerated at 2-8°C for up to 6 months. For long term storage store at -20°C in small aliquots to prevent freeze-thaw cycles.

Precautions:

RAC2 Antibody (C-term) is for research use only and not for use in diagnostic or therapeutic procedures.
