

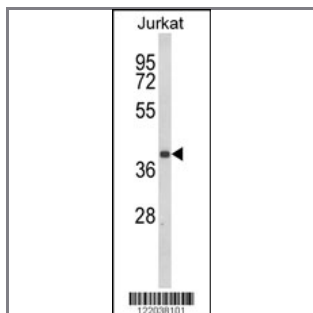
CCR3 Antibody (Center)

Peptide Affinity Purified Rabbit Polyclonal Antibody (Pab)

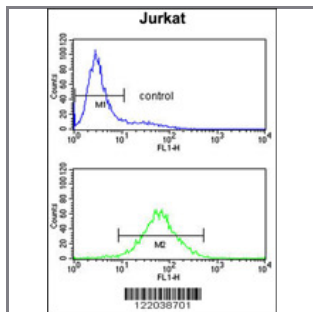
Catalog #	Applications:	Reactivity:	Accessions:
AP8806c	WB, FC, E	H	P51677

Concentration:	Size:	Isotype:	Clone Name:
0.25 mg/ml	0.1 mg	Rabbit Ig	RB22038

Application Data: **Calculated MW: 41044 Da**



Western blot analysis of CCR3 Antibody (Center) (Cat. #AP8806c) in Jurkat cell line lysates (35ug/lane). CCR3 (arrow) was detected using the purified Pab.



CCR3 Antibody (Center) (Cat. #AP8806c) flow cytometry analysis of Jurkat cells (bottom histogram) compared to a negative control cell (top histogram). FITC-conjugated goat-anti-rabbit secondary antibodies were used for the analysis.

Gene ID:	Gene Symbol:
1232	CCR3

Other Names:

CD_antigen=CD193; Eosinophil eotaxin receptor; C-C chemokine receptor type 3, C-C CKR-3; CC-CKR-3; CCR-3; CCR3; CKR3; CCR3, CMKBR3

Target/Specificity:

This CCR3 antibody is generated from rabbits immunized with a KLH conjugated synthetic peptide between 297~327 amino acids from the Center region of human CCR3.

Application Notes:

The suggested dilution is:

ELISA 1:1,000
Western blotting 1:100~500
Flow cytometry 1:10~50

Format:

Purified polyclonal antibody supplied in PBS with 0.09% (W/V) sodium azide. This antibody is purified through a protein A column, followed by peptide affinity purification.

Storage:

Maintain refrigerated at 2-8°C for up to 6 months. For long term storage store at -20°C in small aliquots to prevent freeze-thaw cycles.

Precautions:

CCR3 Antibody (Center) is for research use only and not for use in diagnostic or therapeutic procedures.
