

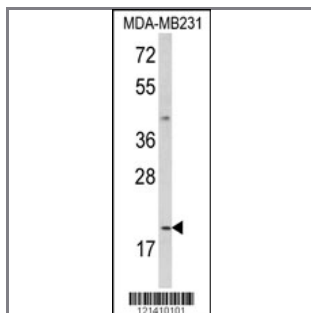
IL12A Antibody (C-term)

Peptide Affinity Purified Rabbit Polyclonal Antibody (Pab)

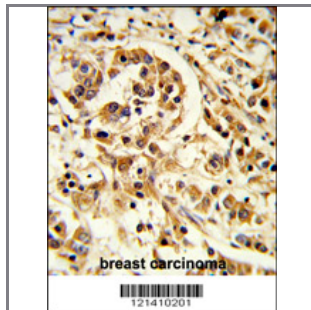
Catalog #	Applications:	Reactivity:	Accessions:
AP8796b	WB, FC, IHC, E	H	P29459

Concentration:	Size:	Isotype:	Clone Name:
0.25 mg/ml	0.1 mg	Rabbit Ig	RB21410

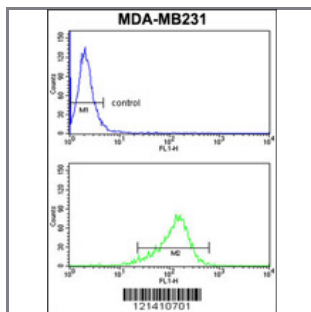
Application Data: **Calculated MW: 24874 Da**



Western blot analysis of IL12A Antibody (C-term) (Cat. #AP8796b) in MDA-MB231 cell line lysates (35ug/lane). IL12A (arrow) was detected using the purified Pab.



Formalin-fixed and paraffin-embedded human breast carcinoma reacted with IL12A Antibody (C-term), which was peroxidase-conjugated to the secondary antibody, followed by DAB staining. This data demonstrates the use of this antibody for immunohistochemistry; clinical relevance has not been evaluated.



IL12A Antibody (C-term) (Cat.#AP8796b) flow cytometry analysis of MDA-MB231 cells (bottom histogram) compared to a negative control cell (top histogram). FITC-conjugated goat-anti-rabbit secondary antibodies were used for the analysis.

Gene ID:	Gene Symbol:
3592	IL12A

Other Names:

NK cell stimulatory factor chain 1, NKSF1; Cytotoxic lymphocyte maturation factor 35 kDa subunit, CLMF p35; IL-12 subunit p35; Interleukin-12 subunit alpha, IL-12A; IL12A, NKSF1

Target/Specificity:

This IL12A antibody is generated from rabbits immunized with a KLH conjugated synthetic peptide between 174~204 amino acids from the C-terminal region of human IL12A.

Application Notes:

The suggested dilution is:

ELISA 1:1,000

Western blotting 1:100~500

Immunohistochemistry 1:50~100

Flow cytometric 1:10~50

Format:

Purified polyclonal antibody supplied in PBS with 0.09% (W/V) sodium azide. This antibody is purified through a protein A column, followed by peptide affinity purification.

Storage:

Maintain refrigerated at 2-8°C for up to 6 months. For long term storage store at -20°C in small aliquots to prevent freeze-thaw cycles.

Precautions:

IL12A Antibody (C-term) is for research use only and not for use in diagnostic or therapeutic procedures.
