

PPID Antibody (N-term)

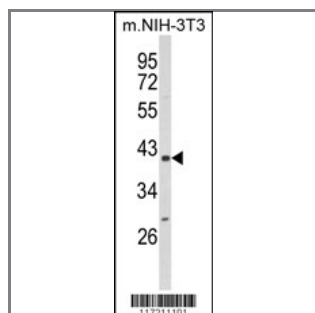
Purified Rabbit Polyclonal Antibody (Pab)

Catalog #	Applications:	Reactivity:	Accessions:
AP8788a	WB, IHC, FC, E	H, M	Q08752

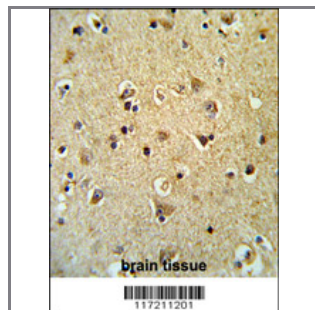
Concentration:	Size:	Isotype:	Clone Name:
0.25 mg/ml	0.1 mg	Rabbit Ig	RB17211

Application Data:

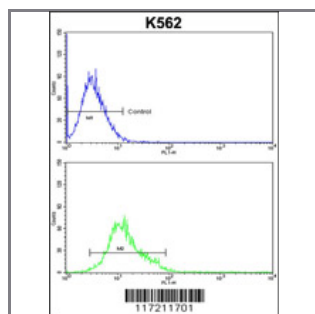
Calculated MW: 40764 Da



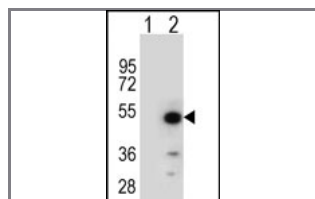
Western blot analysis of PPID Antibody (N-term) (Cat. #AP8788a) in NIH-3T3 cell line lysates (35ug/lane). PPID (arrow) was detected using the purified Pab.



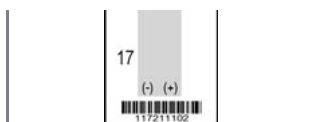
Formalin-fixed and paraffin-embedded human brain tissue reacted with ETFB Antibody (N-term), which was peroxidase-conjugated to the secondary antibody, followed by DAB staining. This data demonstrates the use of this antibody for immunohistochemistry; clinical relevance has not been evaluated.



PPID Antibody (N-term) (Cat. #AP8788a) flow cytometric analysis of k562 cells (bottom histogram) compared to a negative control cell (top histogram). FITC-conjugated goat-anti-rabbit secondary antibodies were used for the analysis.



Western blot analysis of PPID (arrow) using rabbit polyclonal PPID Antibody (N-term) (Cat. #AP8788a). 293 cell lysates (2 ug/lane) either nontransfected (Lane 1) or transiently transfected (Lane 2) with the PPID



gene.

Gene ID:

5481

Gene Symbol:

PPID

Other Names:

Cyclophilin-related protein; Cyclophilin-40, CYP-40; 40 kDa peptidyl-prolyl cis-trans isomerase; Rotamase D; Peptidyl-prolyl cis-trans isomerase D, PPlase D; PPID, CYP40, CYPD

Target/Specificity:

This PPID antibody is generated from rabbits immunized with a KLH conjugated synthetic peptide between 93~122 amino acids from the N-terminal region of human PPID.

Application Notes:

The suggested dilution is:

ELISA 1:1,000

Western blotting 1:50~100

Immunohistochemistry 1:50~100

Flow cytometric 1:10~50

Format:

Purified polyclonal antibody supplied in PBS with 0.09% (W/V) sodium azide. This antibody is prepared by Saturated Ammonium Sulfate (SAS) precipitation followed by dialysis against PBS.

Storage:

Maintain refrigerated at 2-8°C for up to 6 months. For long term storage store at -20°C in small aliquots to prevent freeze-thaw cycles.

Precautions:

PPID Antibody (N-term) is for research use only and not for use in diagnostic or therapeutic procedures.
