

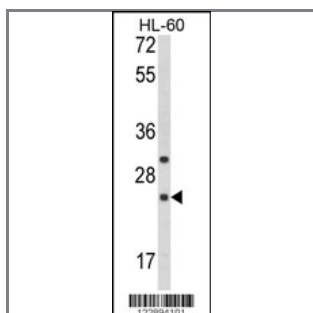
## RGS1 Antibody (N-term)

### Peptide Affinity Purified Rabbit Polyclonal Antibody (Pab)

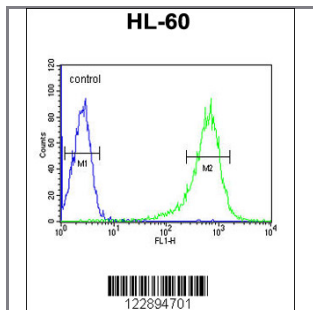
<b>Catalog #</b>	<b>Applications:</b>	<b>Reactivity:</b>	<b>Accessions:</b>
AP8758a	WB, FC, E	H	<a href="#">Q08116</a>

<b>Concentration:</b>	<b>Size:</b>	<b>Isotype:</b>	<b>Clone Name:</b>
0.25 mg/ml	0.1 mg	Rabbit Ig	RB22894

**Application Data:** **Calculated MW: 23858 Da**



Western blot analysis of RGS1 Antibody (N-term) (Cat. #AP8758a) in HL-60 cell line lysates (35ug/lane). RGS1 (arrow) was detected using the purified Pab.



RGS1 Antibody (N-term) (Cat. #AP8758a) flow cytometric analysis of HL-60 cells (right histogram) compared to a negative control cell (left histogram). FITC-conjugated goat-anti-rabbit secondary antibodies were used for the analysis.

<b>Gene ID:</b>	<b>Gene Symbol:</b>
<a href="#">5996</a>	RGS1

#### Other Names:

B-cell activation protein BL34; Early response protein 1R20; Regulator of G-protein signaling 1, RGS1; RGS1, 1R20, BL34, IER1

#### Target/Specificity:

This RGS1 antibody is generated from rabbits immunized with a KLH conjugated synthetic peptide between 25~54 amino acids from the N-term region of human RGS1.

#### Application Notes:

The suggested dilution is:

ELISA 1:1,000  
Western blotting 1:100~500  
Flow cytometric 1:10~50

---

**Format:**

Purified polyclonal antibody supplied in PBS with 0.09% (W/V) sodium azide. This antibody is purified through a protein A column, followed by peptide affinity purification.

---

**Storage:**

Maintain refrigerated at 2-8°C for up to 6 months. For long term storage store at -20°C in small aliquots to prevent freeze-thaw cycles.

---

**Precautions:**

RGS1 Antibody (N-term) is for research use only and not for use in diagnostic or therapeutic procedures.

---