

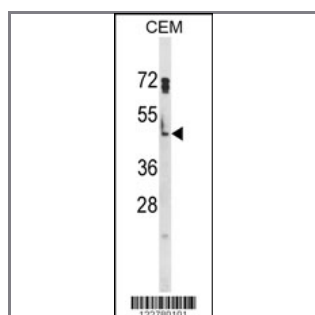
HSPA7 Antibody (Center)

Peptide Affinity Purified Rabbit Polyclonal Antibody (Pab)

| Catalog # | Applications: | Reactivity: | Accessions: |
|-----------|---------------|-------------|------------------------|
| AP8748c | WB, IHC, E | H | P48741 |

| Concentration: | Size: | Isotype: | Clone Name: |
|----------------|--------|-----------|-------------|
| 0.25 mg/ml | 0.1 mg | Rabbit Ig | RB22780 |

Application Data: Calculated MW: 40244 Da



Western blot analysis of HSPA7 Antibody (Center) (Cat. #AP8748c) in CEM cell line lysates (35ug/lane). HSPA7 (arrow) was detected using the purified Pab.



Formalin-fixed and paraffin-embedded human lung carcinoma reacted with HSPA7 Antibody (Center), which was peroxidase-conjugated to the secondary antibody, followed by DAB staining. This data demonstrates the use of this antibody for immunohistochemistry; clinical relevance has not been evaluated.

| Gene ID: | Gene Symbol: |
|----------------------|--------------|
| 3311 | HSPA7 |

Other Names:

Heat shock 70 kDa protein B; Putative heat shock 70 kDa protein 7; HSPA7, HSP70B

Target/Specificity:

This HSPA7 antibody is generated from rabbits immunized with a KLH conjugated synthetic peptide between 175~205 amino acids from the Center region of human HSPA7.

Application Notes:

The suggested dilution is:
 ELISA 1:1,000

Western blotting 1:100~500
Immunohistochemistry 1:50~100

Format:

Purified polyclonal antibody supplied in PBS with 0.09% (W/V) sodium azide. This antibody is purified through a protein A column, followed by peptide affinity purification.

Storage:

Maintain refrigerated at 2-8°C for up to 6 months. For long term storage store at -20°C in small aliquots to prevent freeze-thaw cycles.

Precautions:

HSPA7 Antibody (Center) is for research use only and not for use in diagnostic or therapeutic procedures.
