

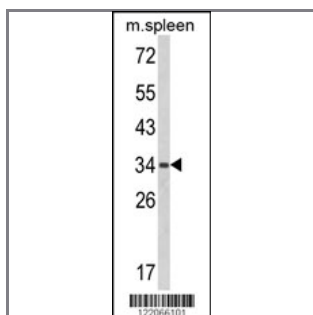
## BAT4 Antibody (C-term)

### Peptide Affinity Purified Rabbit Polyclonal Antibody (Pab)

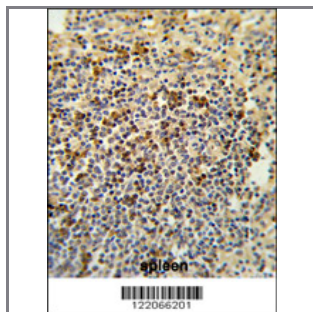
Catalog #	Applications:	Reactivity:	Accessions:
AP8721b	WB, FC, IHC, E	H	<a href="#">O95872</a>

Concentration:	Size:	Isotype:	Clone Name:
0.25 mg/ml	0.1 mg	Rabbit Ig	RB22066

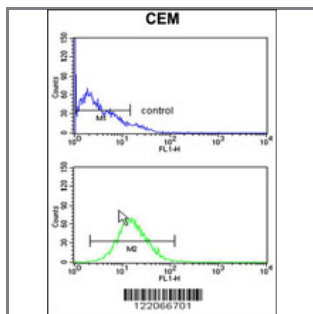
#### Application Data: Calculated MW: 39314 Da



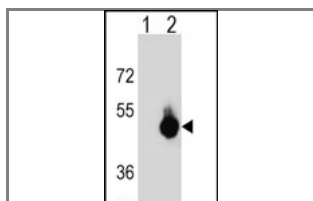
Western blot analysis of BAT4 Antibody (C-term) (Cat. #AP8721b) in mouse spleen tissue lysates (35ug/lane). BAT4 (arrow) was detected using the purified Pab.



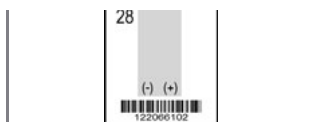
Formalin-fixed and paraffin-embedded human spleen tissue reacted with BAT4 Antibody (C-term), which was peroxidase-conjugated to the secondary antibody, followed by DAB staining. This data demonstrates the use of this antibody for immunohistochemistry; clinical relevance has not been evaluated.



BAT4 Antibody (C-term) (Cat. #AP8721b) flow cytometry analysis of CEM cells (bottom histogram) compared to a negative control cell (top histogram). FITC-conjugated goat-anti-rabbit secondary antibodies were used for the analysis.



Western blot analysis of BAT4 (arrow) using rabbit polyclonal BAT4 Antibody (C-term) (Cat. #AP8721b). 293 cell lysates (2 ug/lane) either nontransfected (Lane 1) or transiently transfected (Lane 2) with the BAT4



gene.

---

**Gene ID:**

7918

**Gene Symbol:**

BAT4

---

**Other Names:**

Protein BAT4; HLA-B-associated transcript 4; G5 protein; G patch domain-containing protein 10; Ankyrin repeat domain-containing protein 59; GPATCH10; G5; ANKRD59; BAT4

---

**Target/Specificity:**

This BAT4 antibody is generated from rabbits immunized with a KLH conjugated synthetic peptide between 281~311 amino acids from the C-terminal region of human BAT4.

---

**Application Notes:**

The suggested dilution is:

ELISA 1:1,000

Western blotting 1:100~500

Immunohistochemistry 1:50~100

Flow cytometry 1:10~50

---

**Format:**

Purified polyclonal antibody supplied in PBS with 0.09% (W/V) sodium azide. This antibody is purified through a protein A column, followed by peptide affinity purification.

---

**Storage:**

Maintain refrigerated at 2-8°C for up to 6 months. For long term storage store at -20°C in small aliquots to prevent freeze-thaw cycles.

---

**Precautions:**

BAT4 Antibody (C-term) is for research use only and not for use in diagnostic or therapeutic procedures.

---