

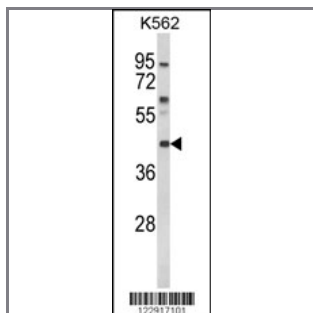
MC3R Antibody (Center)

Peptide Affinity Purified Rabbit Polyclonal Antibody (Pab)

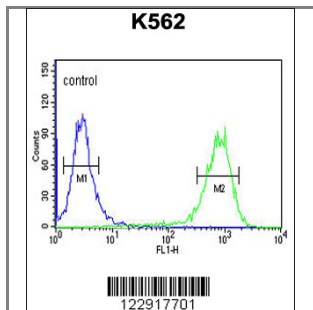
Catalog #	Applications:	Reactivity:	Accessions:
AP8719c	WB, FC, E	H	P41968

Concentration:	Size:	Isotype:	Clone Name:
0.25 mg/ml	0.1 mg	Rabbit Ig	RB22917

Application Data: **Calculated MW: 40073 Da**



Western blot analysis of MC3R Antibody (Center) (Cat. #AP8719c) in K562 cell line lysates (35ug/lane). MC3R (arrow) was detected using the purified Pab.



MC3R Antibody (Center) (Cat. #AP8719c) flow cytometric analysis of K562 cells (right histogram) compared to a negative control cell (left histogram). FITC-conjugated goat-anti-rabbit secondary antibodies were used for the analysis.

Gene ID:	Gene Symbol:
4159	MC3R

Other Names:

Melanocortin receptor 3; MC3-R ; MC3R

Target/Specificity:

This MC3R antibody is generated from rabbits immunized with a KLH conjugated synthetic peptide between 129~158 amino acids from the Center region of human MC3R.

Application Notes:

The suggested dilution is:
ELISA 1:1,000

Western blotting 1:100~500

Flow cytometric 1:10~50

Format:

Purified polyclonal antibody supplied in PBS with 0.09% (W/V) sodium azide. This antibody is purified through a protein A column, followed by peptide affinity purification.

Storage:

Maintain refrigerated at 2-8°C for up to 6 months. For long term storage store at -20°C in small aliquots to prevent freeze-thaw cycles.

Precautions:

MC3R Antibody (Center) is for research use only and not for use in diagnostic or therapeutic procedures.
