

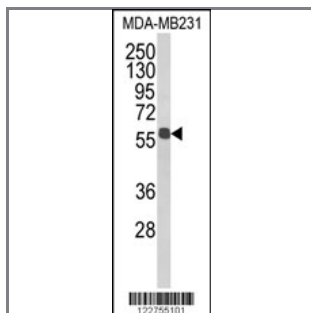
ALDH3B1 Antibody (Center)

Peptide Affinity Purified Rabbit Polyclonal Antibody (Pab)

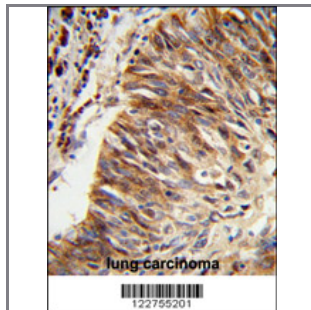
Catalog #	Applications:	Reactivity:	Accessions:
AP8706c	WB, IHC, E	H	P43353

Concentration:	Size:	Isotype:	Clone Name:
0.25 mg/ml	0.1 mg	Rabbit Ig	RB22755

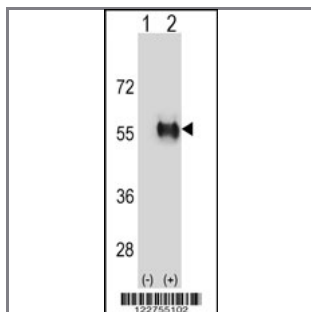
Application Data: Calculated MW: 51840 Da



Western blot analysis of ALDH3B1 Antibody (Center) (Cat. #AP8706c) in MDA-MB231 cell line lysates (35ug/lane). ALDH3B1 (arrow) was detected using the purified Pab.



Formalin-fixed and paraffin-embedded human lung carcinoma reacted with ALDH3B1 Antibody (Center), which was peroxidase-conjugated to the secondary antibody, followed by DAB staining. This data demonstrates the use of this antibody for immunohistochemistry; clinical relevance has not been evaluated.



Western blot analysis of ALDH3B1 (arrow) using rabbit polyclonal ALDH3B1 Antibody (Center) (Cat. #AP8706c). 293 cell lysates (2 ug/lane) either nontransfected (Lane 1) or transiently transfected (Lane 2) with the ALDH3B1 gene.

Gene ID:	Gene Symbol:
221	ALDH3B1

Other Names:

Aldehyde dehydrogenase family 3 member B1; Aldehyde dehydrogenase 7; ALDH7; ALDH3B1

Target/Specificity:

This ALDH3B1 antibody is generated from rabbits immunized with a KLH conjugated synthetic peptide between 340~369 amino acids from the Center region of human ALDH3B.

Application Notes:

The suggested dilution is:

ELISA 1:1,000

Western blotting 1:100~500

Immunohistochemistry 1:50~100

Format:

Purified polyclonal antibody supplied in PBS with 0.09% (W/V) sodium azide. This antibody is purified through a protein A column, followed by peptide affinity purification.

Storage:

Maintain refrigerated at 2-8°C for up to 6 months. For long term storage store at -20°C in small aliquots to prevent freeze-thaw cycles.

Precautions:

ALDH3B1 Antibody (Center) is for research use only and not for use in diagnostic or therapeutic procedures.
