

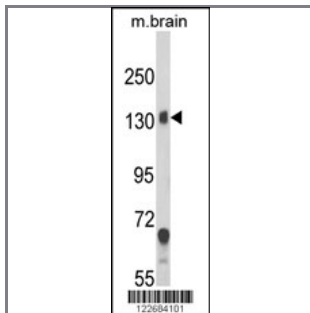
CACNA2D1 Antibody (N-term)

Peptide Affinity Purified Rabbit Polyclonal Antibody (Pab)

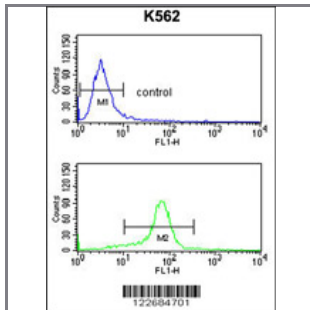
| Catalog # | Applications: | Reactivity: | Accessions: |
|-----------|---------------|-------------|------------------------|
| AP8699a | WB, FC, E | H | P54289 |

| Concentration: | Size: | Isotype: | Clone Name: |
|----------------|--------|-----------|-------------|
| 0.25 mg/ml | 0.1 mg | Rabbit Ig | RB22684 |

Application Data: Calculated MW: 123183 Da



Western blot analysis of CACNA2D1 Antibody (N-term) (Cat. #AP8699a) in mouse brain tissue lysates (35ug/lane). CACNA2D1 (arrow) was detected using the purified Pab.



CACNA2D1 Antibody (N-term) (Cat. #AP8699a) flow cytometry analysis of K562 cells (bottom histogram) compared to a negative control cell (top histogram). FITC-conjugated goat-anti-rabbit secondary antibodies were used for the analysis.

| Gene ID: | Gene Symbol: |
|---------------------|--------------|
| 781 | CACNA2D1 |

Other Names:

Voltage-dependent calcium channel subunit alpha-2/delta-1; Voltage-gated calcium channel subunit alpha-2/delta-1; Voltage-dependent calcium channel subunit alpha-2-1; Voltage-dependent calcium channel subunit delta-1; MHS3; CCHL2A; CACNL2A; CACNA2D1

Target/Specificity:

This CACNA2D1 antibody is generated from rabbits immunized with a KLH conjugated synthetic peptide selected from the N-terminal region of human CACNA2D1.

Application Notes:

The suggested dilution is:

ELISA 1:1,000

Western blotting 1:100~500

Flow cytometry 1:10~50

Format:

Purified polyclonal antibody supplied in PBS with 0.09% (W/V) sodium azide. This antibody is purified through a protein A column, followed by peptide affinity purification.

Storage:

Maintain refrigerated at 2-8°C for up to 6 months. For long term storage store at -20°C in small aliquots to prevent freeze-thaw cycles.

Precautions:

CACNA2D1 Antibody (N-term) is for research use only and not for use in diagnostic or therapeutic procedures.
