

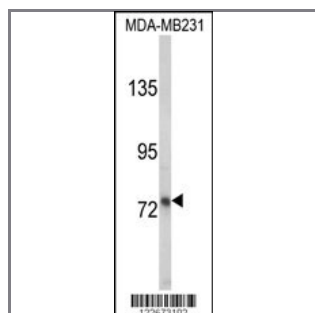
LTF Antibody

Peptide Affinity Purified Rabbit Polyclonal Antibody (Pab)

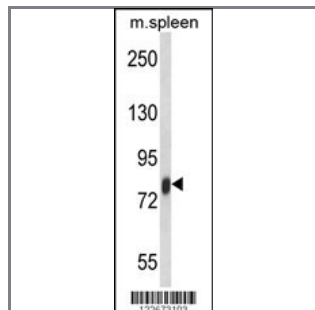
Catalog #	Applications:	Reactivity:	Accessions:
AP8698a	WB, IF, FC, E	H, M	P02788

Concentration:	Size:	Isotype:	Clone Name:
0.25 mg/ml	0.1 mg	Rabbit Ig	RB22673

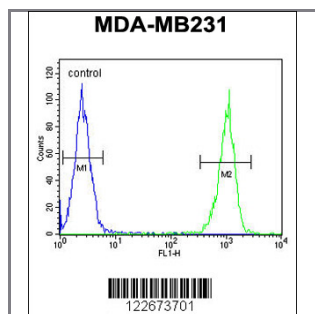
Application Data: **Calculated MW: 78182 Da**



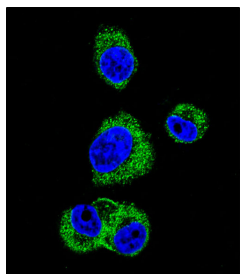
Western blot analysis of LTF Antibody (Cat. #AP8698a) in MDA-MB231 cell line lysates (35ug/lane). LTF (arrow) was detected using the purified Pab.



Western blot analysis of LTF Antibody (Cat. #AP8698a) in mouse spleen tissue lysates (35ug/lane). LTF (arrow) was detected using the purified Pab.



LTF Antibody (Cat. #AP8698a) flow cytometric analysis of MDA-MB231 cells (right histogram) compared to a negative control cell (left histogram). FITC-conjugated goat-anti-rabbit secondary antibodies were used for the analysis.



Confocal immunofluorescent analysis of LTF Antibody(Cat#AP8698a) with MDA-MB231 cell followed by Alexa Fluor 488-conjugated goat anti-rabbit IgG (green).DAPI was used to stain the cell nuclear (blue).

Gene ID:

4057

Gene Symbol:

LTF

Other Names:

Lactotransferrin; Lactoferrin; Talalactoferrin; Kaliocin-1; Lactoferroxin-A; Lactoferroxin-B; Lactoferroxin-C; LF; LTF

Target/Specificity:

This LTF antibody is generated from rabbits immunized with LTF recombinant protein.

Application Notes:

The suggested dilution is:

ELISA 1:1,000

Western blotting 1:100~500

Immunohistochemistry 1:50~100

Flow cytometric 1:10~50

Immunofluorescence 1:10~50

Format:

Purified polyclonal antibody supplied in PBS with 0.09% (W/V) sodium azide. This antibody is purified through a protein A column, followed by peptide affinity purification.

Storage:

Maintain refrigerated at 2-8°C for up to 6 months. For long term storage store at -20°C in small aliquots to prevent freeze-thaw cycles.

Precautions:

LTF Antibody is for research use only and not for use in diagnostic or therapeutic procedures.
