

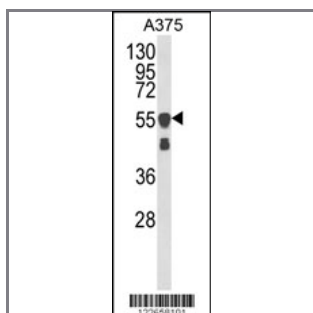
VIME Antibody

Peptide Affinity Purified Rabbit Polyclonal Antibody (Pab)

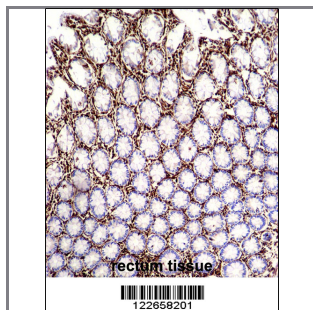
Catalog #	Applications:	Reactivity:	Accessions:
AP8694a	WB, IHC, E	H	P08670

Concentration:	Size:	Isotype:	Clone Name:
0.25 mg/ml	0.1 mg	Rabbit Ig	RB22658

Application Data: Calculated MW: 53652 Da



Western blot analysis of VIME Antibody (Cat. #AP8694a) in A375 cell line lysates (35ug/lane). VIME (arrow) was detected using the purified Pab.



VIME Antibody (Cat. #AP8694a) immunohistochemistry analysis in formalin fixed and paraffin embedded human rectum tissue followed by peroxidase conjugation of the secondary antibody and DAB staining. This data demonstrates the use of VIME Antibody for immunohistochemistry. Clinical relevance has not been evaluated.

Gene ID:	Gene Symbol:
7431	VIM

Other Names:

Vimentin; VIM

Target/Specificity:

This VIME antibody is generated from rabbits immunized with VIME recombinant protein.

Application Notes:

The suggested dilution is:

ELISA 1:1,000

Western blotting 1:100~500

Format:

Purified polyclonal antibody supplied in PBS with 0.09% (W/V) sodium azide. This antibody is purified through a protein A column, followed by peptide affinity purification.

Storage:

Maintain refrigerated at 2-8°C for up to 6 months. For long term storage store at -20°C in small aliquots to prevent freeze-thaw cycles.

Precautions:

VIME Antibody is for research use only and not for use in diagnostic or therapeutic procedures.
