

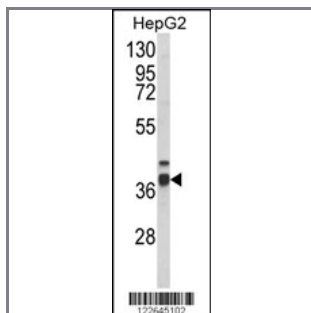
PECI Antibody (C-term)

Peptide Affinity Purified Rabbit Polyclonal Antibody (Pab)

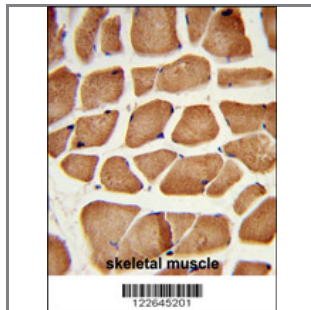
Catalog #	Applications:	Reactivity:	Accessions:
AP8692b	WB, FC, IHC, E	H	O75521

Concentration:	Size:	Isotype:	Clone Name:
0.25 mg/ml	0.1 mg	Rabbit Ig	RB22645

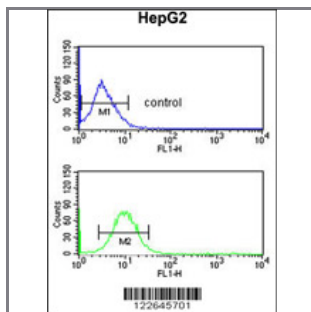
Application Data: Calculated MW: 39609 Da



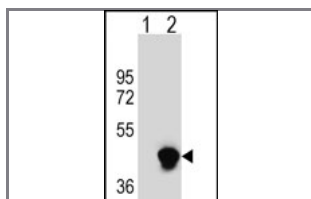
Western blot analysis of PECI Antibody (C-term) (Cat. #AP8692b) in HepG2 cell line lysates (35ug/lane). PECI (arrow) was detected using the purified Pab.



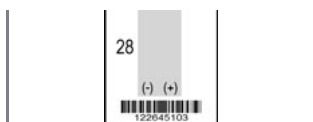
Formalin-fixed and paraffin-embedded human skeletal muscle reacted with PECI Antibody (C-term), which was peroxidase-conjugated to the secondary antibody, followed by DAB staining. This data demonstrates the use of this antibody for immunohistochemistry; clinical relevance has not been evaluated.



PECI Antibody (C-term) (Cat. #AP8692b) flow cytometric analysis of HepG2 cells (bottom histogram) compared to a negative control cell (top histogram). FITC-conjugated goat-anti-rabbit secondary antibodies were used for the analysis.



Western blot analysis of PECI (arrow) using rabbit polyclonal PECI Antibody (C-term) (Cat. #AP8692b). 293 cell lysates (2 ug/lane) either nontransfected (Lane 1) or transiently transfected (Lane 2) with the PECI



gene.

Gene ID:

10455

Gene Symbol:

PECI

Other Names:

Peroxisomal 3,2-trans-enoyl-CoA isomerase; Dodecenoyl-CoA isomerase; Delta(3),delta(2)-enoyl-CoA isomerase; D3,D2-enoyl-CoA isomerase; DBI-related protein 1; DRS-1; Hepatocellular carcinoma-associated antigen 88; Renal carcinoma antigen NY-REN-1; HCA88; DRS1; PECI

Target/Specificity:

This PECI antibody is generated from rabbits immunized with a KLH conjugated synthetic peptide between 337~367 amino acids from the C-terminal region of human PECI.

Application Notes:

The suggested dilution is:

ELISA 1:1,000

Western blotting 1:100~500

Immunohistochemistry 1:50~100

Flow cytometry 1:10~50

Format:

Purified polyclonal antibody supplied in PBS with 0.09% (W/V) sodium azide. This antibody is purified through a protein A column, followed by peptide affinity purification.

Storage:

Maintain refrigerated at 2-8°C for up to 6 months. For long term storage store at -20°C in small aliquots to prevent freeze-thaw cycles.

Precautions:

PECI Antibody (C-term) is for research use only and not for use in diagnostic or therapeutic procedures.
