

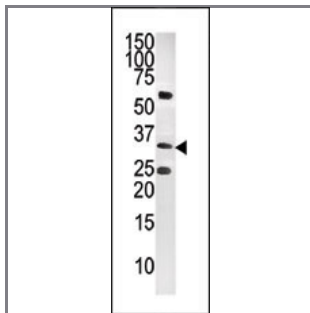
CTDSP1-V250 Antibody (C-term)

Purified Rabbit Polyclonal Antibody (Pab)

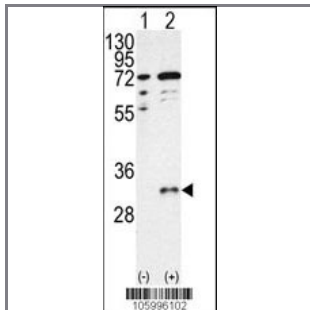
Catalog #	Applications:	Reactivity:	Accessions:
AP8461b	WB, IHC, E	H	Q9GZU7
Concentration:	Size:	Isotype:	Clone Name:
0.25 mg/ml	0.1 mg	Rabbit Ig	RB5996

Application Data:

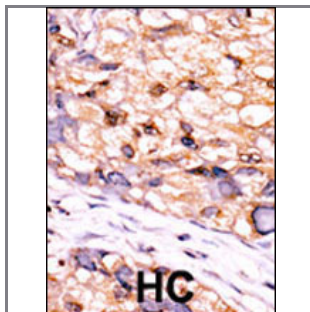
Calculated MW: 29203 Da



The anti-CTDSP1-V250 (Cat. #AP8461b) is used in Western blot to detect CTDSP1-V250 in CEM tissue lysate.



Western blot analysis of CTDSP1 (arrow) using CTDSP1-V250 Antibody (C-term) (Cat.#AP8461b). 293 cell lysates (2 ug/lane) either nontransfected (Lane 1) or transiently transfected with the CTDSP1 gene (Lane 2) (Origene Technologies).



Formalin-fixed and paraffin-embedded human cancer tissue reacted with the primary antibody, which was peroxidase-conjugated to the secondary antibody, followed by DAB staining. This data demonstrates the use of this antibody for immunohistochemistry; clinical relevance has not been evaluated. BC = breast carcinoma; HC = hepatocarcinoma.

Gene ID:	Gene Symbol:
58190	CTDSP1

Other Names:

Nuclear LIM interactor-interacting factor 3; NLI-interacting factor 3; NLI-IF

Target/Specificity:

This CTDSP1-V250 antibody is generated from rabbits immunized with a KLH conjugated synthetic peptide between 232~261 amino acids from the C-terminal region of human CTDSP1-V250 protein.

Application Notes:

The suggested dilution is:

ELISA 1:1,000

Western blotting 1:100~500

Immunohistochemistry 1:50~100

Format:

Purified polyclonal antibody supplied in PBS with 0.09% (W/V) sodium azide. This antibody is prepared by Saturated Ammonium Sulfate (SAS) precipitation followed by dialysis against PBS.

Storage:

Maintain refrigerated at 2-8°C for up to 6 months. For long term storage store at -20°C in small aliquots to prevent freeze-thaw cycles.

Precautions:

CTDSP1-V250 Antibody (C-term) is for research use only and not for use in diagnostic or therapeutic procedures.
