

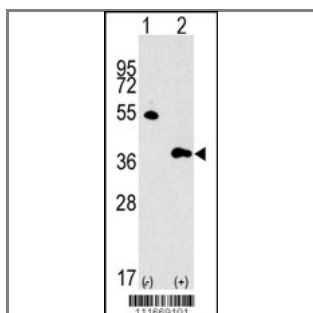
## GBL Antibody (Center)

### Purified Rabbit Polyclonal Antibody (Pab)

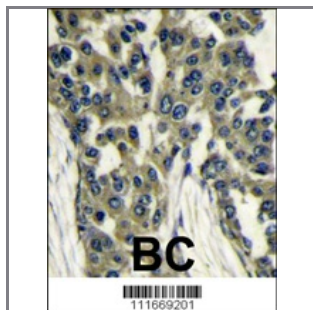
<b>Catalog #</b>	<b>Applications:</b>	<b>Reactivity:</b>	<b>Accessions:</b>
AP8200c	WB, IHC, E	H	<a href="#">Q9BVC4</a>
<b>Concentration:</b>	<b>Size:</b>	<b>Isotype:</b>	<b>Clone Name:</b>
0.25 mg/ml	0.1 mg	Rabbit Ig	RB11669

#### Application Data:

**Calculated MW: 35876 Da**



Western blot analysis of GBL Antibody (Center) polyclonal antibody (Cat#AP8200c) (arrow). 293 cell lysates (2 ug/lane) either nontransfected (Lane 1) or transiently transfected with the GBL gene (Lane 2) (Origene Technologies).



Formalin-fixed and paraffin-embedded human breast carcinoma reacted with GBL antibody (Center), which was peroxidase-conjugated to the secondary antibody, followed by DAB staining. This data demonstrates the use of this antibody for immunohistochemistry; clinical relevance has not been evaluated.

<b>Gene ID:</b>	<b>Gene Symbol:</b>
<a href="#">64223</a>	MLST8

#### Other Names:

G protein beta subunit-like; GBL protein; GBL;

#### Target/Specificity:

This GBL antibody is generated from rabbits immunized with a KLH conjugated synthetic peptide between 148~177 amino acids from the center region of human GBL.

#### Application Notes:

The suggested dilution is:  
ELISA 1:1,000

Western blotting 1:250~500  
Immunohistochemistry 1:50~100

---

**Format:**

Purified polyclonal antibody supplied in PBS with 0.09% (W/V) sodium azide. This antibody is purified through a protein A column, eluted with high and low pH buffers and neutralized immediately, followed by dialysis against PBS.

---

**Storage:**

Maintain refrigerated at 2-8°C for up to 6 months. For long term storage store at -20°C in small aliquots to prevent freeze-thaw cycles.

---

**Precautions:**

GBL Antibody (Center) is for research use only and not for use in diagnostic or therapeutic procedures.

---