

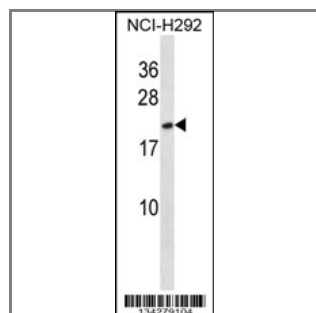
HMGB3 Antibody (Center)

Peptide Affinity Purified Rabbit Polyclonal Antibody (Pab)

Catalog #	Applications:	Reactivity:	Accessions:
AP14662c	WB, E	H	O15347 , NP_005333.2
Concentration:	Size:	Isotype:	Clone Name:
0.25 mg/ml	0.1 mg	Rabbit Ig	RB34279

Application Data:

Calculated MW: 22980 Da



HMGB3 Antibody (Center) (Cat. #AP14662c) western blot analysis in NCI-H292 cell line lysates (35ug/lane). This demonstrates the HMGB3 antibody detected the HMGB3 protein (arrow).

Gene ID:	Gene Symbol:
3149	HMGB3

Other Names:

High mobility group protein B3;HMGB3;HMG2A; HMG4

Target/Specificity:

This HMGB3 antibody is generated from rabbits immunized with a KLH conjugated synthetic peptide between 49-79 amino acids from the Central region of human HMGB3.

Application Notes:

The suggested dilution is:

ELISA 1:1,000

Western blotting 1:100~500

Format:

Purified polyclonal antibody supplied in PBS with 0.09% (W/V) sodium azide. This antibody is purified through a protein A column, followed by peptide affinity purification.

Storage:

HMGB3 Antibody (Center) can be refrigerated at 2-8°C for up to 6 months. For long term storage,

place the at -20°C.

Precautions:

HMGB3 Antibody (Center) is for research use only and not for use in diagnostic or therapeutic procedures.
