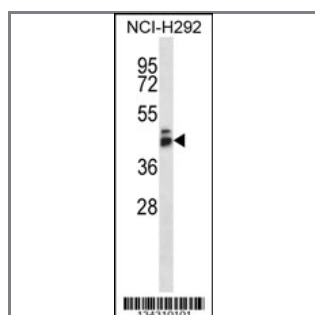


GPR27 Antibody (Center)

Peptide Affinity Purified Rabbit Polyclonal Antibody (Pab)

Catalog #	Applications:	Reactivity:	Accessions:
AP14514c	WB, E	H	NP_061844.1 , Q9NS67
Concentration:	Size:	Isotype:	Clone Name:
0.25 mg/ml	0.1 mg	Rabbit Ig	RB34310

Application Data: Calculated MW: 39818 Da



GPR27 Antibody (Center) (Cat. #AP14514c) western blot analysis in NCI-H292 cell line lysates (35ug/lane). This demonstrates the GPR27 antibody detected the GPR27 protein (arrow).

Gene ID:	Gene Symbol:
2850	GPR27

Other Names:

Probable G-protein coupled receptor 27;GPR27;SREB1

Target/Specificity:

This GPR27 antibody is generated from rabbits immunized with a KLH conjugated synthetic peptide between 192-221 amino acids from the Central region of human GPR27.

Application Notes:

The suggested dilution is:
 ELISA 1:1,000
 Western blotting 1:100~500

Format:

Purified polyclonal antibody supplied in PBS with 0.09% (W/V) sodium azide. This antibody is purified through a protein A column, followed by peptide affinity purification.

Storage:

GPR27 Antibody (Center) can be refrigerated at 2-8°C for up to 6 months. For long term storage,

place the at -20°C.

Precautions:

GPR27 Antibody (Center) is for research use only and not for use in diagnostic or therapeutic procedures.
