

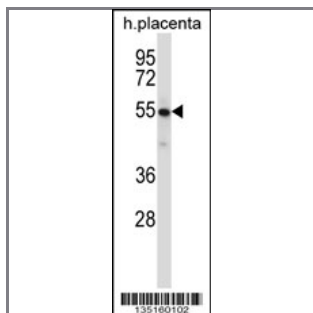
Mouse Yes1 Antibody (N-term)

Peptide Affinity Purified Rabbit Polyclonal Antibody (Pab)

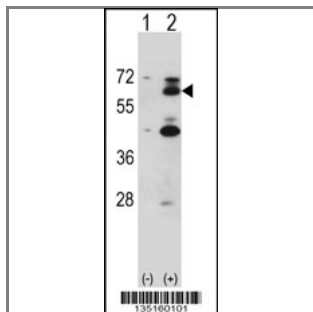
Catalog #	Applications:	Reactivity:	Accessions:
AP14473a	WB, E	H, M(Predict)	NP_033561.1 , Q04736
Concentration:	Size:	Isotype:	Clone Name:
0.25 mg/ml	0.1 mg	Rabbit Ig	RB35160

Application Data:

Calculated MW: 60630 Da



Mouse Yes1 Antibody (N-term) (Cat. #AP14473a) western blot analysis in human placenta tissue lysates (35ug/lane). This demonstrates the Yes1 antibody detected the Yes1 protein (arrow).



Western blot analysis of Yes1 (arrow) using rabbit polyclonal Mouse Yes1 Antibody (N-term) (Cat. #AP14473a). 293 cell lysates (2 ug/lane) either nontransfected (Lane 1) or transiently transfected (Lane 2) with the Yes1 gene.

Gene ID:	Gene Symbol:
22612	Yes1

Other Names:

Proto-oncogene tyrosine-protein kinase Yes;Yes1;Yes

Target/Specificity:

This Mouse Yes1 antibody is generated from rabbits immunized with a KLH conjugated synthetic peptide between 1-30 amino acids from the N-terminal region of Mouse Yes1.

Application Notes:

The suggested dilution is:
ELISA 1:1,000

Western blotting 1:100~500

Format:

Purified polyclonal antibody supplied in PBS with 0.09% (W/V) sodium azide. This antibody is purified through a protein A column, followed by peptide affinity purification.

Storage:

Mouse Yes1 Antibody (N-term) can be refrigerated at 2-8°C for up to 6 months. For long term storage, place the at -20°C.

Precautions:

Mouse Yes1 Antibody (N-term) is for research use only and not for use in diagnostic or therapeutic procedures.
