

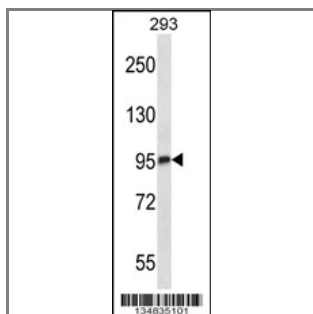
## Mouse Mark3 Antibody (C-term)

### Peptide Affinity Purified Rabbit Polyclonal Antibody (Pab)

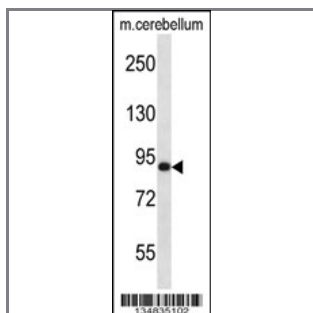
Catalog #	Applications:	Reactivity:	Accessions:
AP14270b	WB, E	H, M	<a href="#">NP_067491.2</a> , <a href="#">NP_073712.2</a> , <a href="#">Q03141</a>
Concentration:	Size:	Isotype:	Clone Name:
0.25 mg/ml	0.1 mg	Rabbit Ig	RB34835

#### Application Data:

Calculated MW: 84390 Da



Mouse Mark3 Antibody (C-term) (Cat. #AP14270b) western blot analysis in 293 cell line lysates (35ug/lane). This demonstrates the Mark3 antibody detected the Mark3 protein (arrow).



Mouse Mark3 Antibody (C-term) (Cat. #AP14270b) western blot analysis in mouse cerebellum tissue lysates (35ug/lane). This demonstrates the Mark3 antibody detected the Mark3 protein (arrow).

Gene ID:	Gene Symbol:
<a href="#">17169</a>	Mark3

#### Other Names:

MAP/microtubule affinity-regulating kinase 3; Mark3; Emk2; Mpk10

#### Target/Specificity:

This Mouse Mark3 antibody is generated from rabbits immunized with a KLH conjugated synthetic peptide between 607-636 amino acids from the C-terminal region of Mouse Mark3.

#### Application Notes:

The suggested dilution is:

ELISA 1:1,000  
Western blotting 1:100~500

---

**Format:**

Purified polyclonal antibody supplied in PBS with 0.09% (W/V) sodium azide. This antibody is purified through a protein A column, followed by peptide affinity purification.

---

**Storage:**

Mouse Mark3 Antibody (C-term) can be refrigerated at 2-8°C for up to 6 months. For long term storage, place the at -20°C.

---

**Precautions:**

Mouse Mark3 Antibody (C-term) is for research use only and not for use in diagnostic or therapeutic procedures.

---