

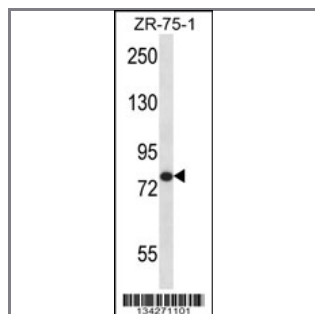
AGGF1 Antibody (N-term)

Peptide Affinity Purified Rabbit Polyclonal Antibody (Pab)

Catalog #	Applications:	Reactivity:	Accessions:
AP14242a	WB, E	H	NP_060516.2 , Q8N302
Concentration:	Size:	Isotype:	Clone Name:
0.25 mg/ml	0.1 mg	Rabbit Ig	RB34271

Application Data:

Calculated MW: 80977 Da



AGGF1 Antibody (N-term) (Cat. #AP14242a) western blot analysis in ZR-75-1 cell line lysates (35ug/lane). This demonstrates the AGGF1 antibody detected the AGGF1 protein (arrow).

Gene ID:	Gene Symbol:
55109	AGGF1

Other Names:

Angiogenic factor with G patch and FHA domains 1;AGGF1;GPATC7; GPATCH7; VG5Q

Target/Specificity:

This AGGF1 antibody is generated from rabbits immunized with a KLH conjugated synthetic peptide between 60-90 amino acids from the N-terminal region of human AGGF1.

Application Notes:

The suggested dilution is:

ELISA 1:1,000

Western blotting 1:100~500

Format:

Purified polyclonal antibody supplied in PBS with 0.09% (W/V) sodium azide. This antibody is purified through a protein A column, followed by peptide affinity purification.

Storage:

AGGF1 Antibody (N-term) can be refrigerated at 2-8°C for up to 6 months. For long term storage, place the at -20°C.

Precautions:

AGGF1 Antibody (N-term) is for research use only and not for use in diagnostic or therapeutic procedures.
