

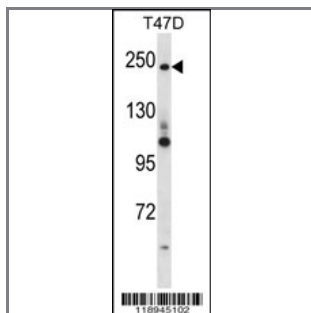
## PPL Antibody (C-term)

### Peptide Affinity Purified Rabbit Polyclonal Antibody (Pab)

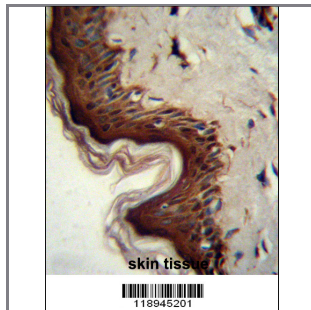
Catalog #	Applications:	Reactivity:	Accessions:
AP14171b	WB, IHC, E	H	<a href="#">O60437</a> , <a href="#">NP_002696.3</a>
Concentration:	Size:	Isotype:	Clone Name:
0.25 mg/ml	0.1 mg	Rabbit Ig	RB18945

#### Application Data:

Calculated MW: 204678 Da



PPL Antibody (C-term) (Cat. #AP14171b) western blot analysis in T47D cell line lysates (35ug/lane). This demonstrates the PPL antibody detected the PPL protein (arrow).



PPL Antibody (C-term) (Cat. #AP14171b) immunohistochemistry analysis in formalin fixed and paraffin embedded human skin tissue followed by peroxidase conjugation of the secondary antibody and DAB staining. This data demonstrates the use of PPL Antibody (C-term) for immunohistochemistry. Clinical relevance has not been evaluated.

Gene ID:	Gene Symbol:
<a href="#">5493</a>	PPL

#### Other Names:

Periplakin; PPL; KIAA0568

#### Target/Specificity:

This PPL antibody is generated from rabbits immunized with a KLH conjugated synthetic peptide between 1300-1331 amino acids from the C-terminal region of human PPL.

#### Application Notes:

The suggested dilution is:  
ELISA 1:1,000

Western blotting 1:100~500  
Immunohistochemistry 1:10~50

---

**Format:**

Purified polyclonal antibody supplied in PBS with 0.09% (W/V) sodium azide. This antibody is purified through a protein A column, followed by peptide affinity purification.

---

**Storage:**

PPL Antibody (C-term) can be refrigerated at 2-8°C for up to 6 months. For long term storage, place the at -20°C.

---

**Precautions:**

PPL Antibody (C-term) is for research use only and not for use in diagnostic or therapeutic procedures.

---