

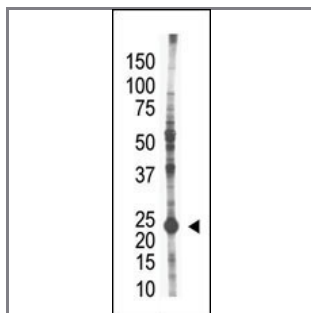
E2EPF Antibody (N-term)

Purified Rabbit Polyclonal Antibody (Pab)

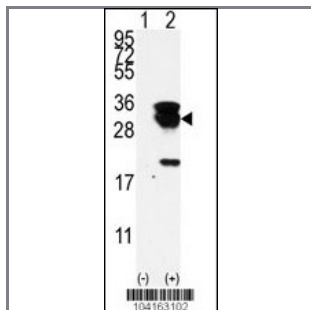
Catalog #	Applications:	Reactivity:	Accessions:
AP2120a	WB, IHC, E	H	Q16763

Concentration:	Size:	Isotype:	Clone Name:
0.25 mg/ml	0.1 mg	Rabbit Ig	RB4163

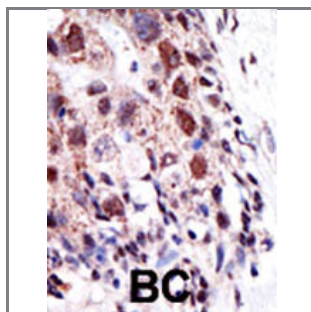
Application Data: **Calculated MW: 23845 Da**



The anti-E2EPF Pab (Cat. #AP2120a) is used in Western blot to detect E2EPF in HL-60 cell lysate.



Western blot analysis of E2EPF (arrow) using E2EPF Antibody (N-term) (Cat.#AP2120a). 293 cell lysates (2 ug/lane) either nontransfected (Lane 1) or transiently transfected with the UBE2S gene (Lane 2) (Origene Technologies).



Formalin-fixed and paraffin-embedded human cancer tissue reacted with the primary antibody, which was peroxidase-conjugated to the secondary antibody, followed by AEC staining. This data demonstrates the use of this antibody for immunohistochemistry; clinical relevance has not been evaluated. BC = breast carcinoma; HC = hepatocarcinoma.

Gene ID:	Gene Symbol:
27338	UBE2S

Other Names:

Ubiquitin-conjugating enzyme E2S; Ubiquitin-conjugating enzyme E2-24 kDa; Ubiquitin-protein ligase; Ubiquitin carrier protein; E2-EPF5

Target/Specificity:

This E2EPF antibody is generated from rabbits immunized with a KLH conjugated synthetic peptide between 18~47 amino acids from the N-terminal region of human E2EPF.

Application Notes:

The suggested dilution is:

ELISA 1:1,000

Western blotting 1:100~500

Immunohistochemistry 1:50~100

Format:

Purified polyclonal antibody supplied in PBS with 0.09% (W/V) sodium azide. This antibody is purified through a protein G column, eluted with high and low pH buffers and neutralized immediately, followed by dialysis against PBS.

Storage:

Maintain refrigerated at 2-8°C for up to 6 months. For long term storage store at -20°C in small aliquots to prevent freeze-thaw cycles.

Precautions:

E2EPF Antibody (N-term) is for research use only and not for use in diagnostic or therapeutic procedures.
