

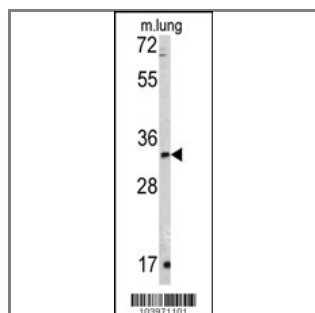
Rex1 (ZFP42) Antibody (N-term)

Purified Rabbit Polyclonal Antibody (Pab)

Catalog #	Applications:	Reactivity:	Accessions:
AP2051a	WB, E	H, M	Q8WXE2
Concentration:	Size:	Isotype:	Clone Name:
0.25 mg/ml	0.1 mg	Rabbit Ig	RB3971-3972

Application Data:

Calculated MW: 34802 Da



Western blot analysis of Rex1 (ZFP42) antibody (N-term) (Cat.# AP2051a) in mouse lung tissue lysates (35ug/lane). Rex1 (arrow) was detected using the purified Pab.

Gene ID:	Gene Symbol:
132625	ZFP42

Other Names:

"Zinc finger protein 42, Rex1, Rex-1"

Target/Specificity:

This Rex1 (ZFP42) antibody is generated from rabbits immunized with a KLH conjugated synthetic peptide between 1~30 amino acids from the N-terminal region of human ZFP42.

Application Notes:

The suggested dilution is:
ELISA 1:1,000
Western Blot 1:50~100

Format:

Purified polyclonal antibody supplied in PBS with 0.09% (W/V) sodium azide. This antibody is purified through a protein G column, eluted with high and low pH buffers and neutralized immediately, followed by dialysis against PBS.

Storage:

Maintain refrigerated at 2-8°C for up to 6 months. For long term storage store at -20°C in small aliquots to prevent freeze-thaw cycles.

Precautions:

Rex1 (ZFP42) Antibody (N-term) is for research use only and not for use in diagnostic or therapeutic procedures.
