

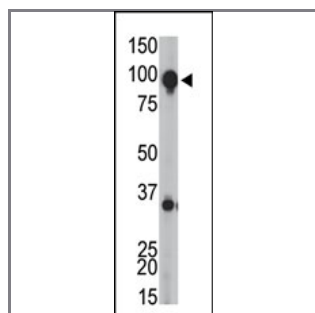
Metabotropic Glutamate Receptor 8 (GRPRC1H) Antibody (C-term)

Purified Rabbit Polyclonal Antibody (Pab)

Catalog #	Applications:	Reactivity:	Accessions:
AP1641a	WB, E	H, M	O00222

Concentration:	Size:	Isotype:	Clone Name:
0.25 mg/ml	0.1 mg	Rabbit Ig	RB4637

Application Data: **Calculated MW: 101740 Da**



The GRPRC1H C-term Pab (Cat. #AP1641a) is used in Western blot to detect GRPRC1H in mouse brain tissue lysate.

Gene ID:	Gene Symbol:
2918	GRM8

Other Names:

Metabotropic glutamate receptor 8; mGluR8; GPRC1H; MGLUR8

Target/Specificity:

This GRPRC1H antibody is generated from rabbits immunized with a KLH conjugated synthetic peptide between 860~889 amino acids from the C-terminal region of human GRPRC1H.

Application Notes:

The suggested dilution is:

ELISA 1:1,000

Western blotting 1:100~500

Format:

Purified polyclonal antibody supplied in PBS with 0.09% (W/V) sodium azide. This antibody is purified through a protein G column, eluted with high and low pH buffers and neutralized immediately, followed by dialysis against PBS.

Storage:

Maintain refrigerated at 2-8°C for up to 6 months. For long term storage store at -20°C in small aliquots to prevent freeze-thaw cycles.

Precautions:

Metabotropic Glutamate Receptor 8 (GRPRC1H) Antibody (C-term) is for research use only and not for use in diagnostic or therapeutic procedures.
