

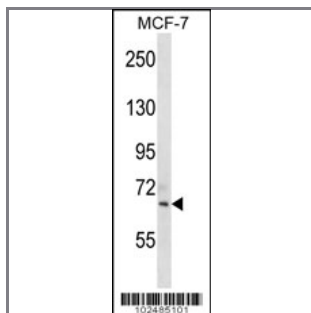
## SIGLEC11 Antibody (C-term)

### Peptide Affinity Purified Rabbit Polyclonal Antibody (Pab)

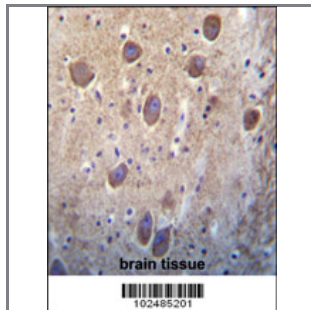
Catalog #	Applications:	Reactivity:	Accessions:
AP1629b	WB, IHC, E	H	<a href="#">Q96RL6</a>

Concentration:	Size:	Isotype:	Clone Name:
0.25 mg/ml	0.1 mg	Rabbit Ig	RB2485

#### Application Data: Calculated MW: 74544 Da



SIGLEC11 Antibody (Cat. #AP1629b) western blot analysis in MCF-7 cell line lysates (35ug/lane). This demonstrates the SIGLEC11 antibody detected the SIGLEC11 protein (arrow).



SIGLEC11 Antibody (C-term) (Cat. #AP1629b) immunohistochemistry analysis in formalin fixed and paraffin embedded human brain tissue followed by peroxidase conjugation of the secondary antibody and DAB staining. This data demonstrates the use of SIGLEC11 Antibody (C-term) for immunohistochemistry. Clinical relevance has not been evaluated.

Gene ID:	Gene Symbol:
<a href="#">114132</a>	SIGLEC11

#### Other Names:

Sialoahesin 11

#### Target/Specificity:

This SIGLEC11 antibody is generated from rabbits immunized with a KLH conjugated synthetic peptide selected from the C-terminal region of human SIGLEC11.

#### Application Notes:

The suggested dilution will be:  
ELISA 1:1,000

Western blotting 1:100~500  
Immunohistochemistry 1:10~50

---

**Format:**

Purified polyclonal antibody supplied in PBS with 0.09% (W/V) sodium azide. This antibody is purified through a protein A column, followed by peptide affinity purification.

---

**Storage:**

Maintain refrigerated at 2-8°C for up to 6 months. For long term storage store at -20°C in small aliquots to prevent freeze-thaw cycles.

---

**Precautions:**

SIGLEC11 Antibody (C-term) is for research use only and not for use in diagnostic or therapeutic procedures.

---