

CBFA2T2 Antibody (N-term)

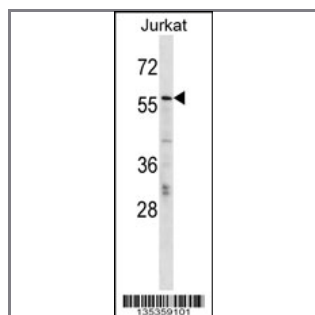
Peptide Affinity Purified Rabbit Polyclonal Antibody (Pab)

Catalog #	Applications:	Reactivity:	Accessions:
AP16252a	WB, E	H	NP_001028171.1 , NP_005084.1 , O43439 , NP_001034798.1

Concentration:	Size:	Isotype:	Clone Name:
0.25 mg/ml	0.1 mg	Rabbit Ig	RB35359

Application Data:

Calculated MW: 67133 Da



CBFA2T2 Antibody (N-term) (Cat. #AP16252a) western blot analysis in Jurkat cell line lysates (35ug/lane). This demonstrates the CBFA2T2 antibody detected the CBFA2T2 protein (arrow).

Gene ID:	Gene Symbol:
9139	CBFA2T2

Other Names:

Protein CBFA2T2;CBFA2T2;EHT; MTGR1

Target/Specificity:

This CBFA2T2 antibody is generated from rabbits immunized with a KLH conjugated synthetic peptide between 1-30 amino acids from the N-terminal region of human CBFA2T2.

Application Notes:

The suggested dilution is:

ELISA 1:1,000

Western blotting 1:100~500

Format:

Purified polyclonal antibody supplied in PBS with 0.09% (W/V) sodium azide. This antibody is purified through a protein A column, followed by peptide affinity purification.

Storage:

CBFA2T2 Antibody (N-term) can be refrigerated at 2-8°C for up to 6 months. For long term storage, place the at -20°C.

Precautions:

CBFA2T2 Antibody (N-term) is for research use only and not for use in diagnostic or therapeutic procedures.
