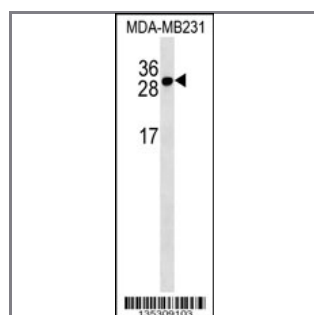


TNFRSF17 Antibody (Center)

Peptide Affinity Purified Rabbit Polyclonal Antibody (Pab)

Catalog #	Applications:	Reactivity:	Accessions:
AP16248c	WB, E	H	Q02223 , NP_001183.2
Concentration:	Size:	Isotype:	Clone Name:
0.25 mg/ml	0.1 mg	Rabbit Ig	RB35309

Application Data: Calculated MW: 20165 Da



TNFRSF17 Antibody (Center) (Cat. #AP16248c) western blot analysis in MDA-MB231 cell line lysates (35ug/lane). This demonstrates the TNFRSF17 antibody detected the TNFRSF17 protein (arrow).

Gene ID:	Gene Symbol:
608	TNFRSF17

Other Names:

Tumor necrosis factor receptor superfamily member 17; TNFRSF17; BCM; BCMA

Target/Specificity:

This TNFRSF17 antibody is generated from rabbits immunized with a KLH conjugated synthetic peptide between 62-92 amino acids from the Central region of human TNFRSF17.

Application Notes:

The suggested dilution is:
 ELISA 1:1,000
 Western blotting 1:100~500

Format:

Purified polyclonal antibody supplied in PBS with 0.09% (W/V) sodium azide. This antibody is purified through a protein A column, followed by peptide affinity purification.

Storage:

TNFRSF17 Antibody (Center) can be refrigerated at 2-8°C for up to 6 months. For long term

storage, place the at -20°C.

Precautions:

TNFRSF17 Antibody (Center) is for research use only and not for use in diagnostic or therapeutic procedures.
